

Figure 1 : vue d'ensemble du Génie Civil à réaliser sur la commune de POISEUL-LA-VILLE-ET-LAPERRIERE

1. CONTACT :

Maître d'ouvrage :

Conseil Départemental de Côte-d'Or

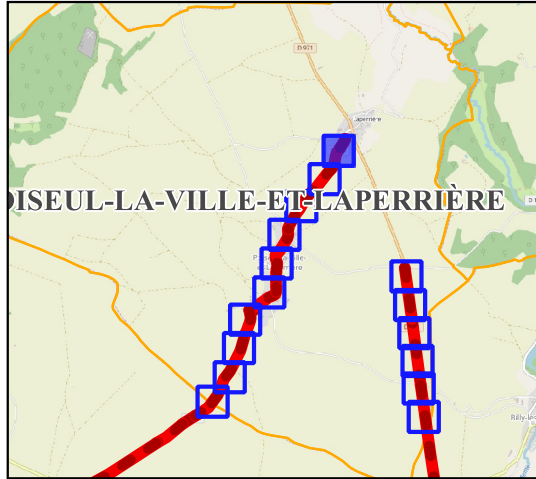
**Pôle Aménagement et Développement des Territoires
Mission Aménagement numérique**

**1, rue Joseph Tissot
B.P. 1601 – 21035 Dijon Cedex**

Chargé d'affaires Mission Aménagement numérique :

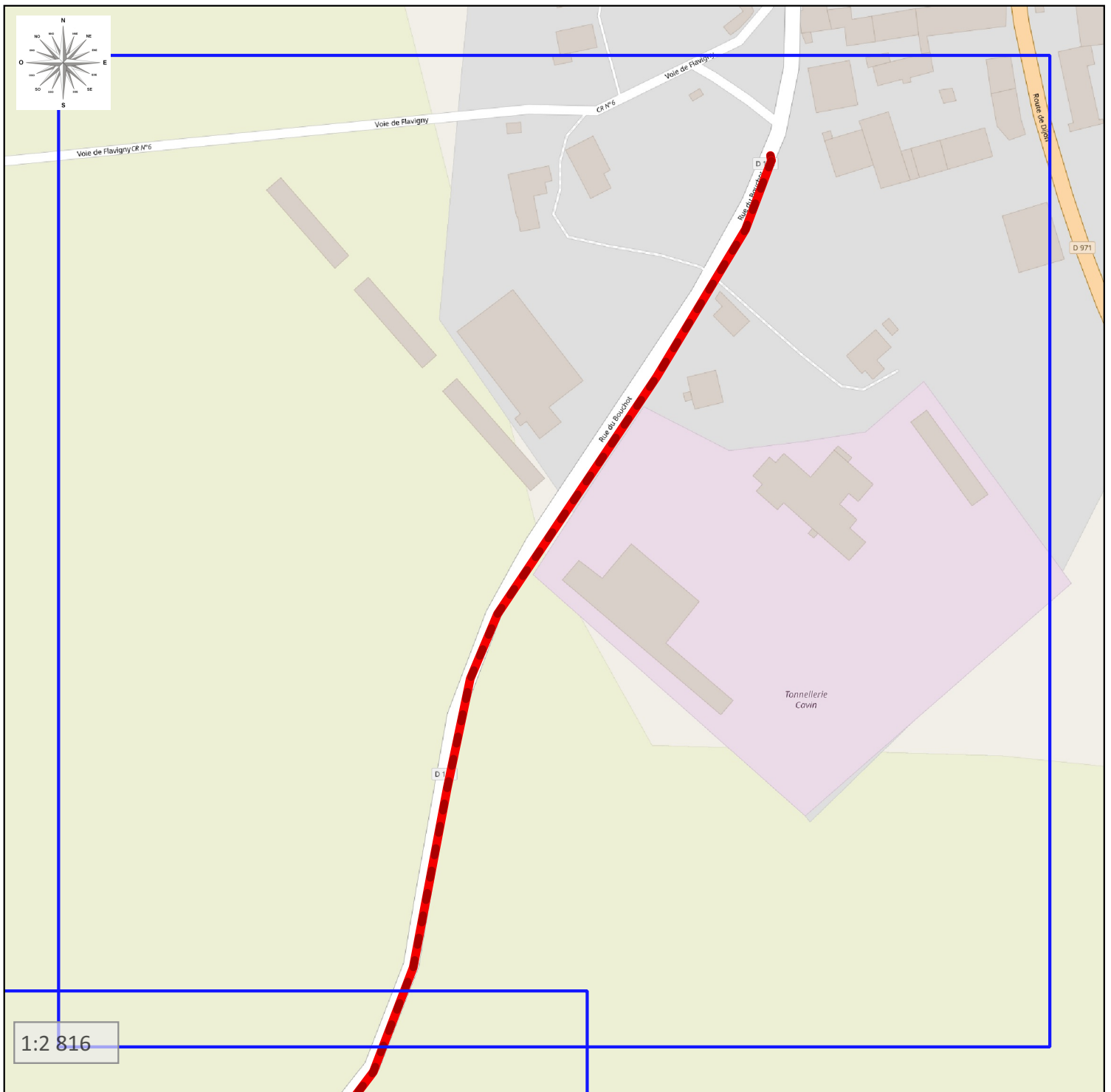
**M. Frédéric POURNIN
Tel : 03 80 63 67 12
e-courriel : frederic.pournin@cotedor.fr**

Synoptique GC D114

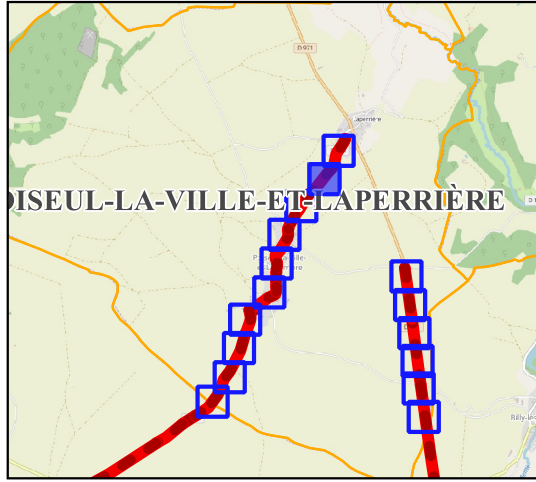


Légende :

GC

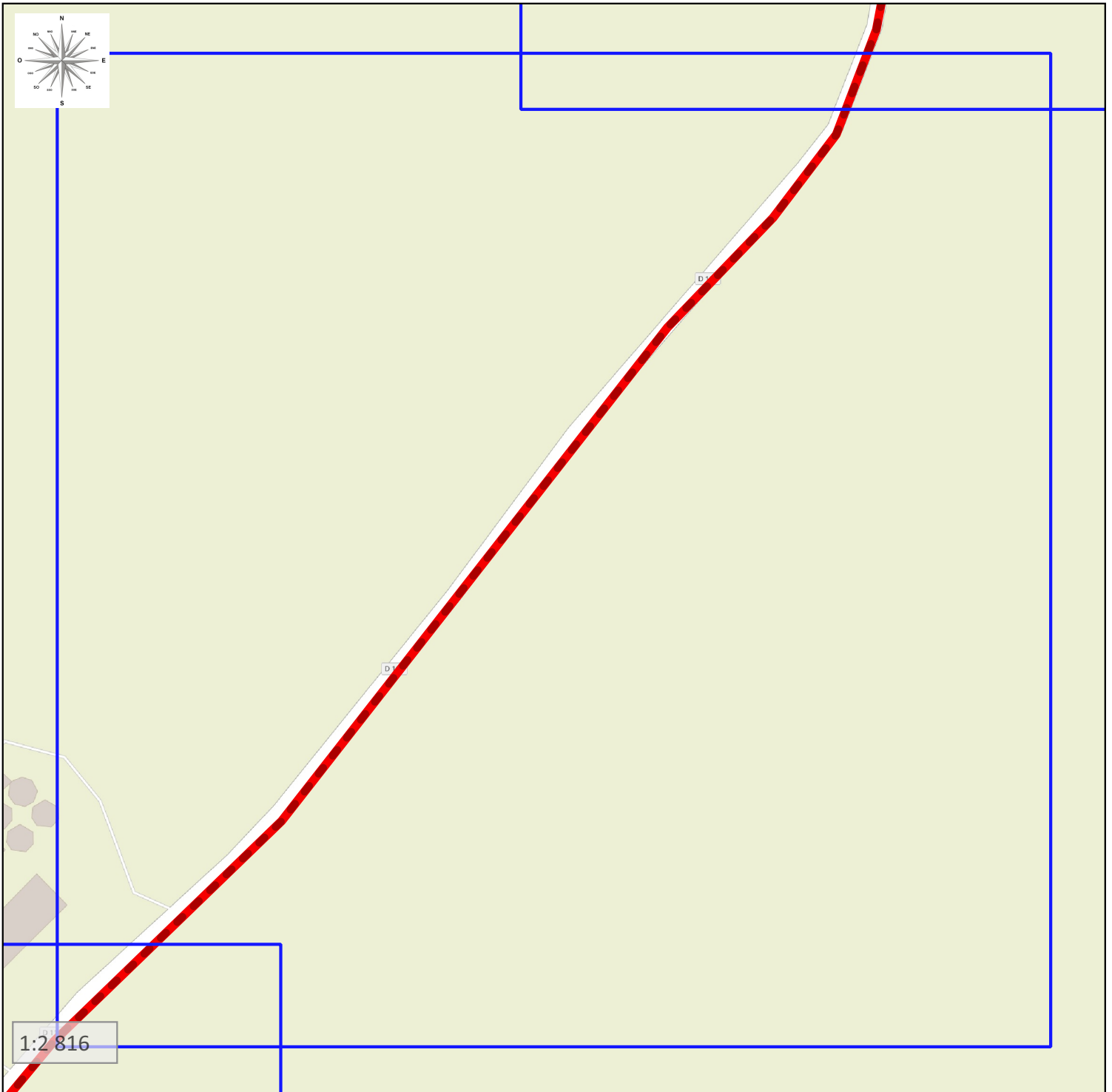


Synoptique GC
D114

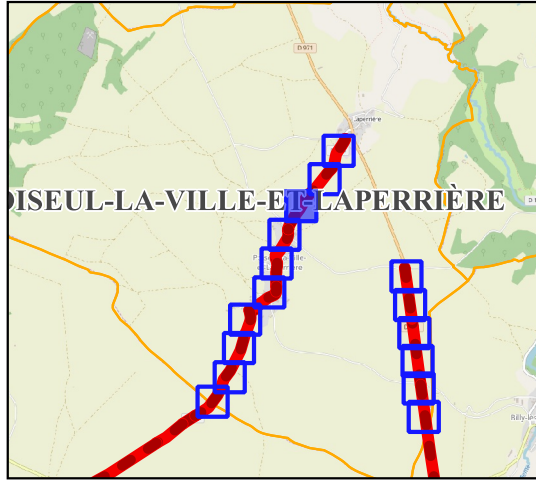


Légende :


GC

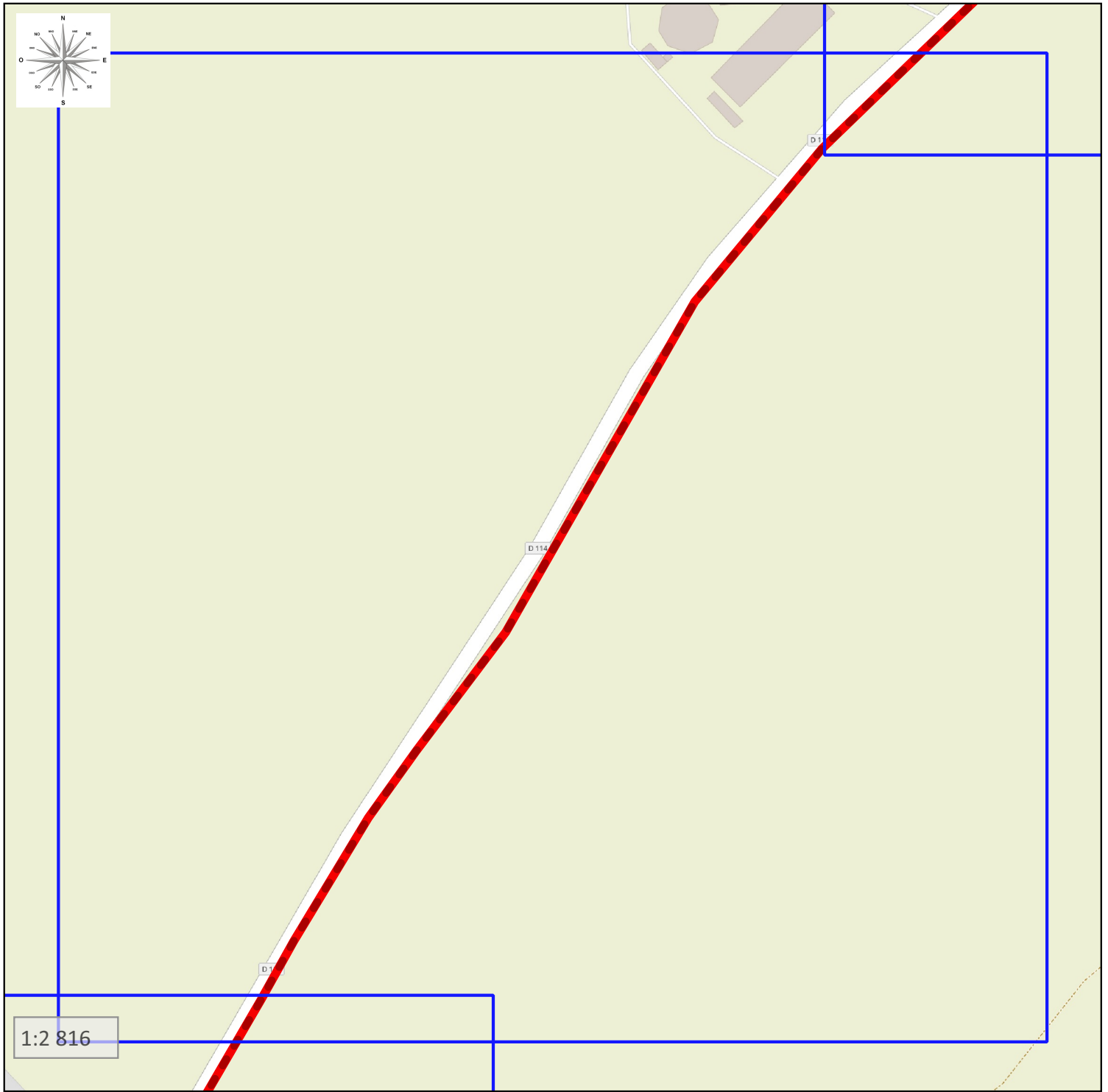


Synoptique GC
D114

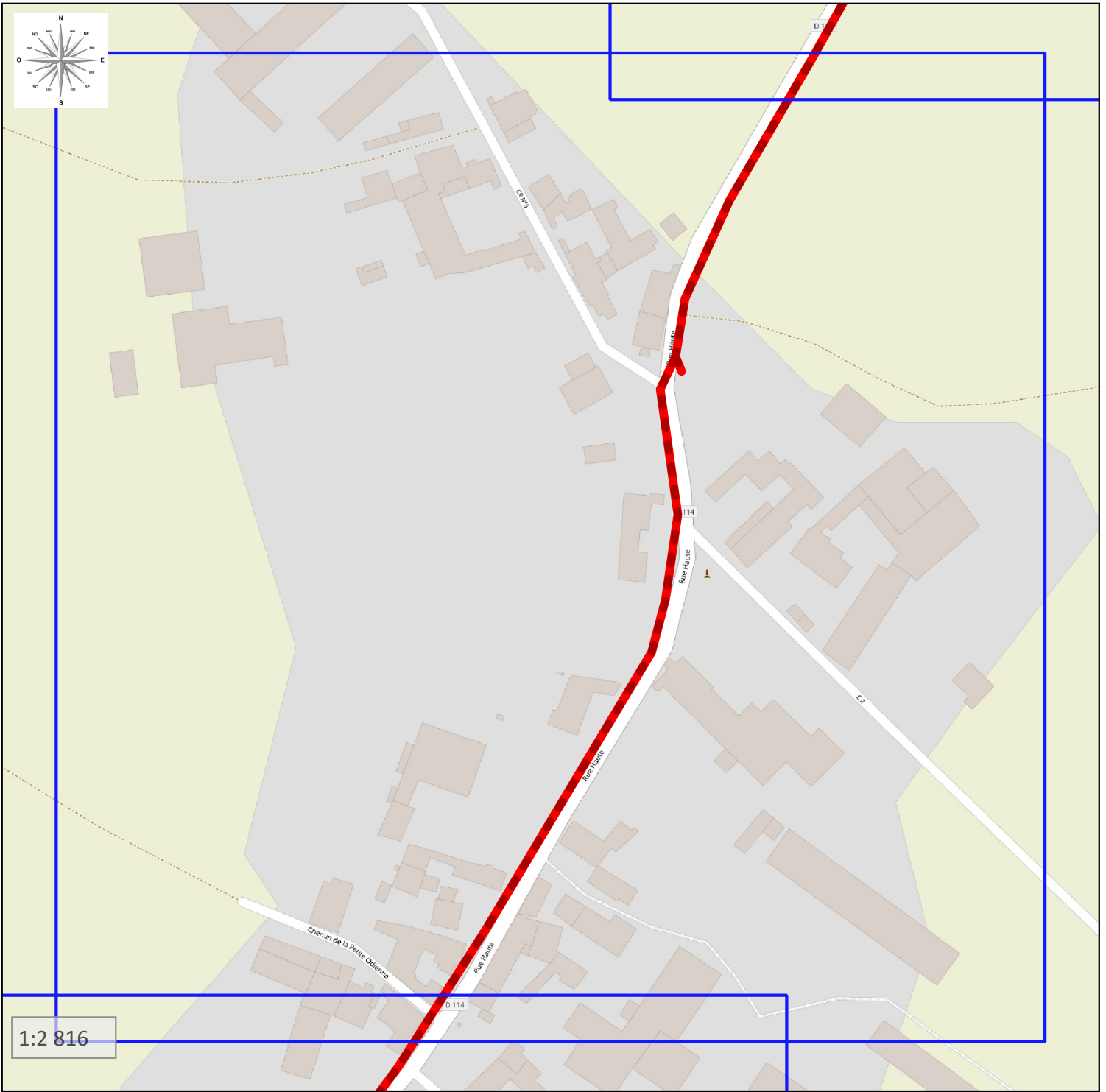
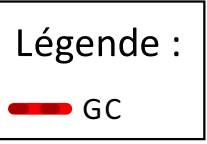
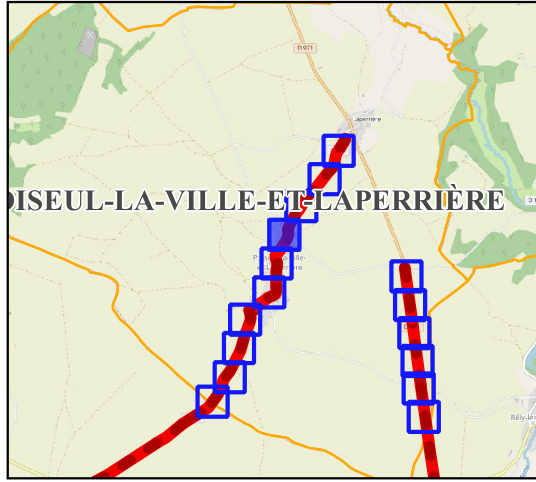


Légende :

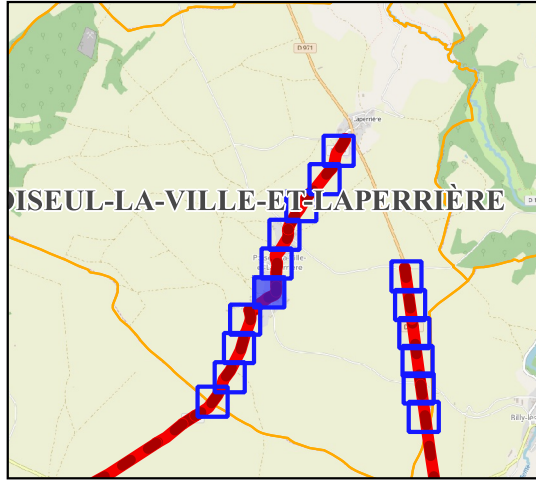
 GC




Synoptique GC
D114

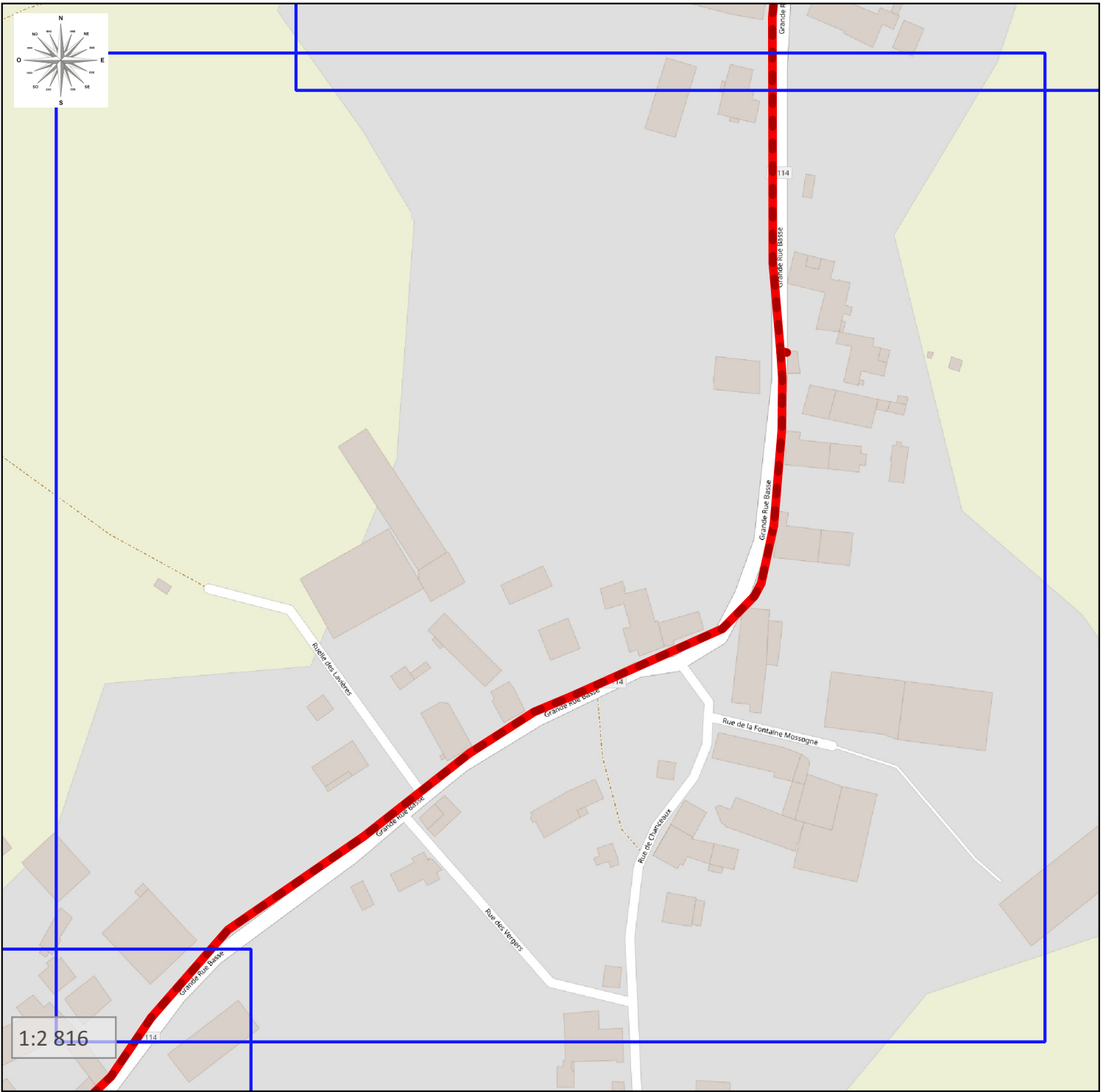


Synoptique GC
D114

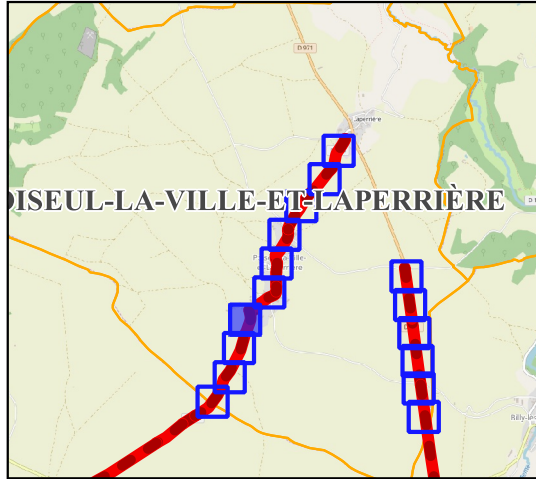


Légende :

 GC

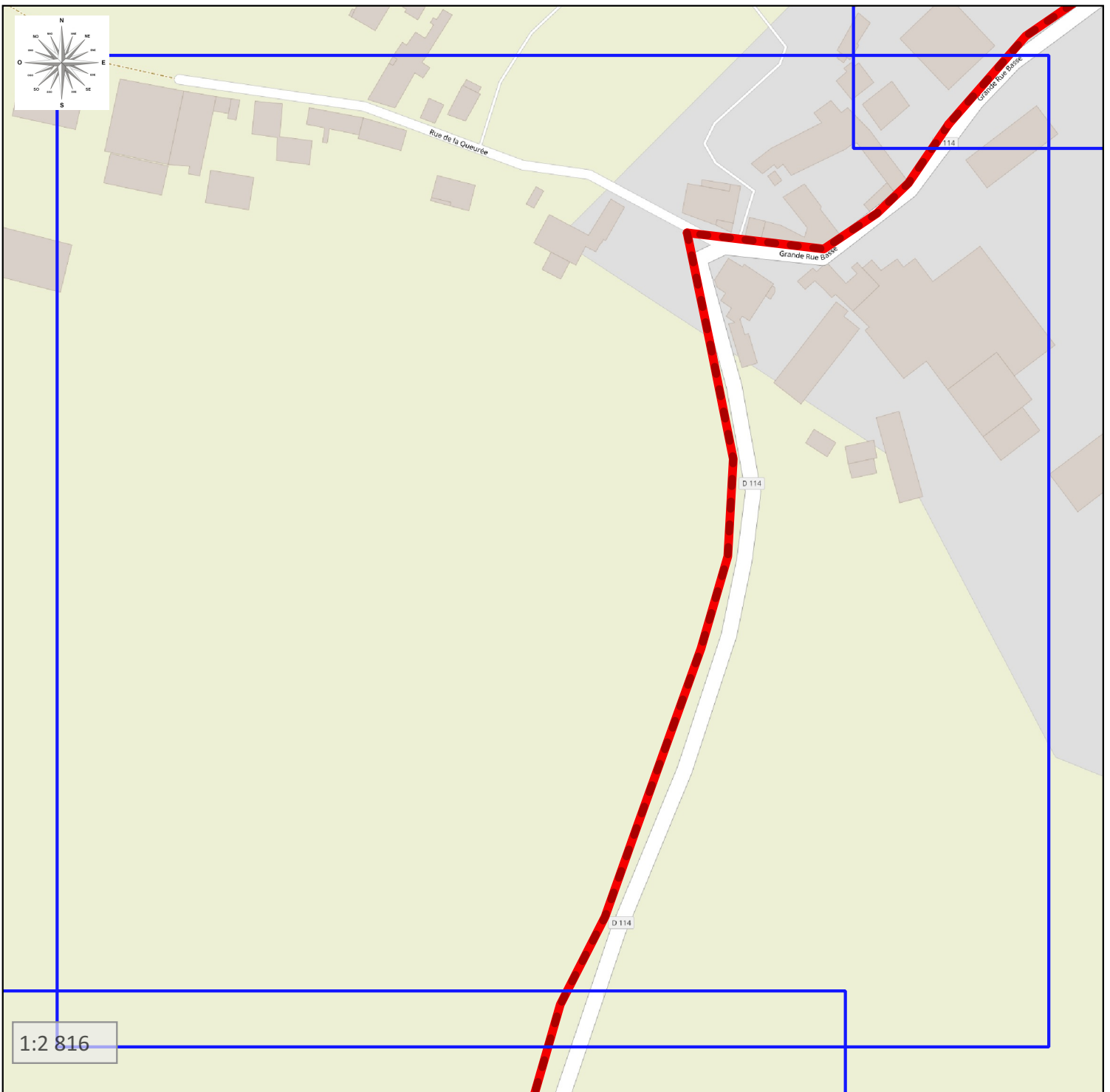


Synoptique GC
D114

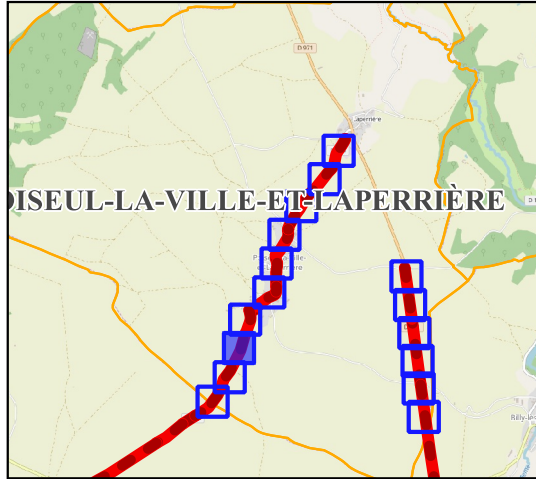


Légende :

GC

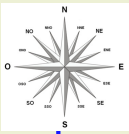


Synoptique GC
D114

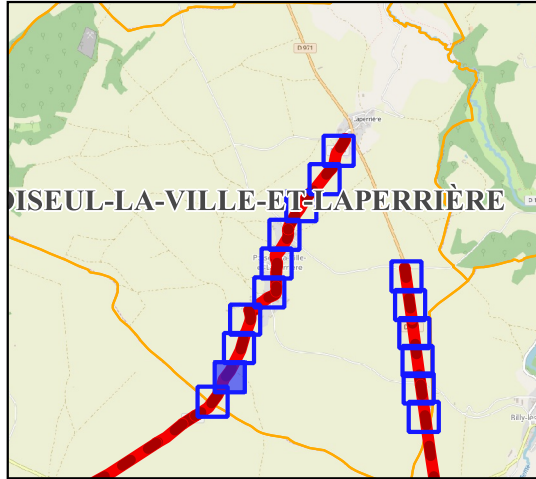


Légende :


GC

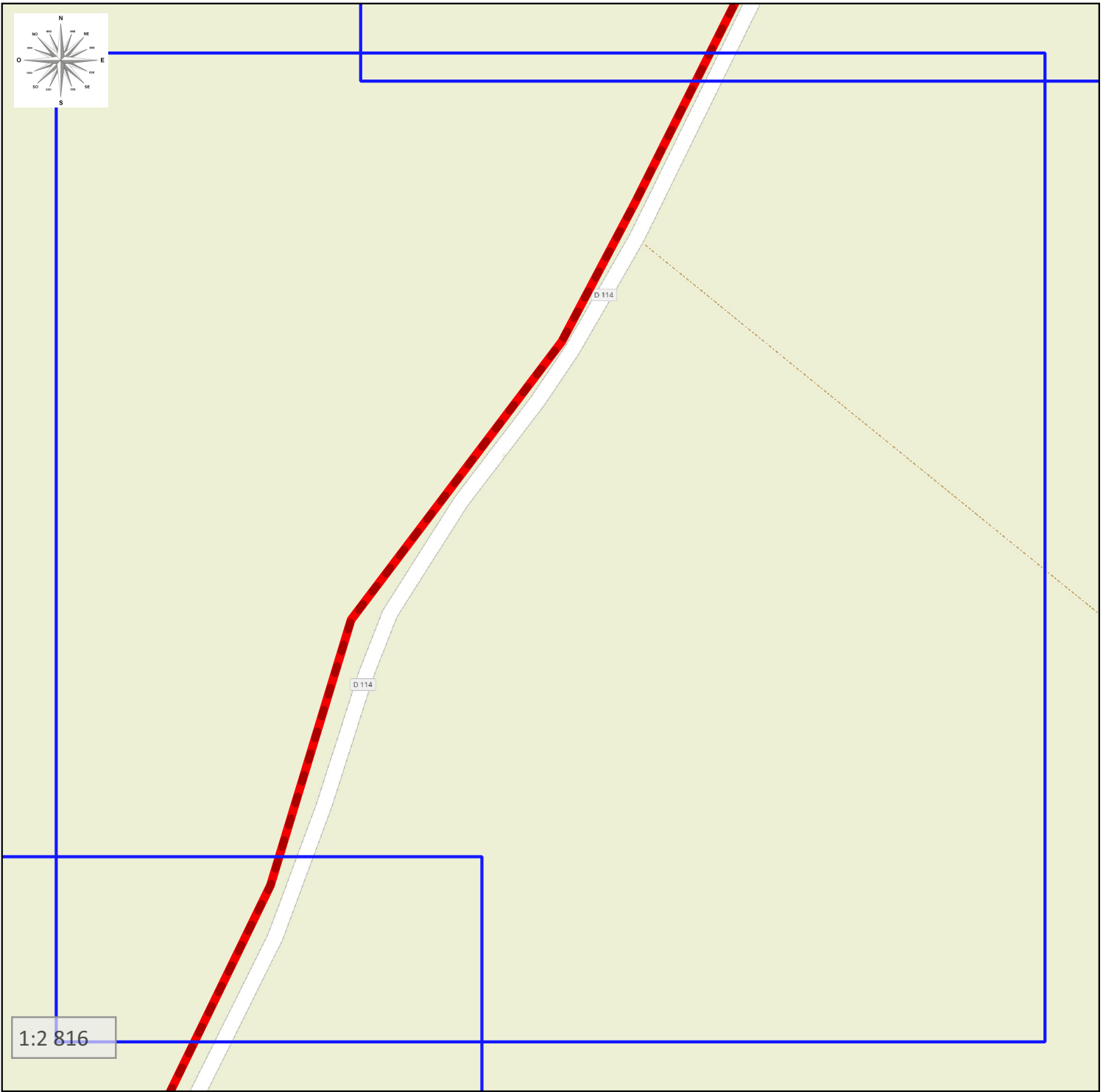


Synoptique GC D114



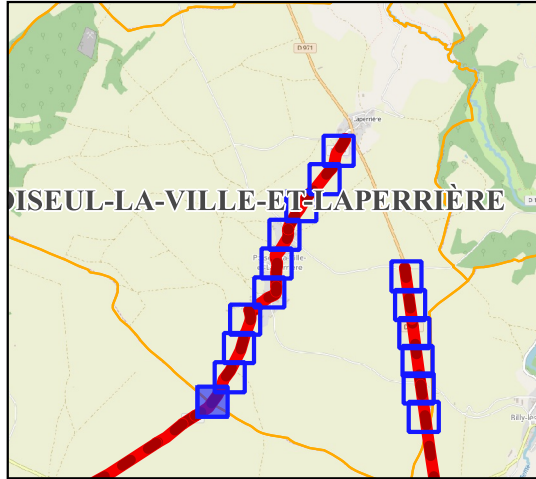
Légende :

 GC



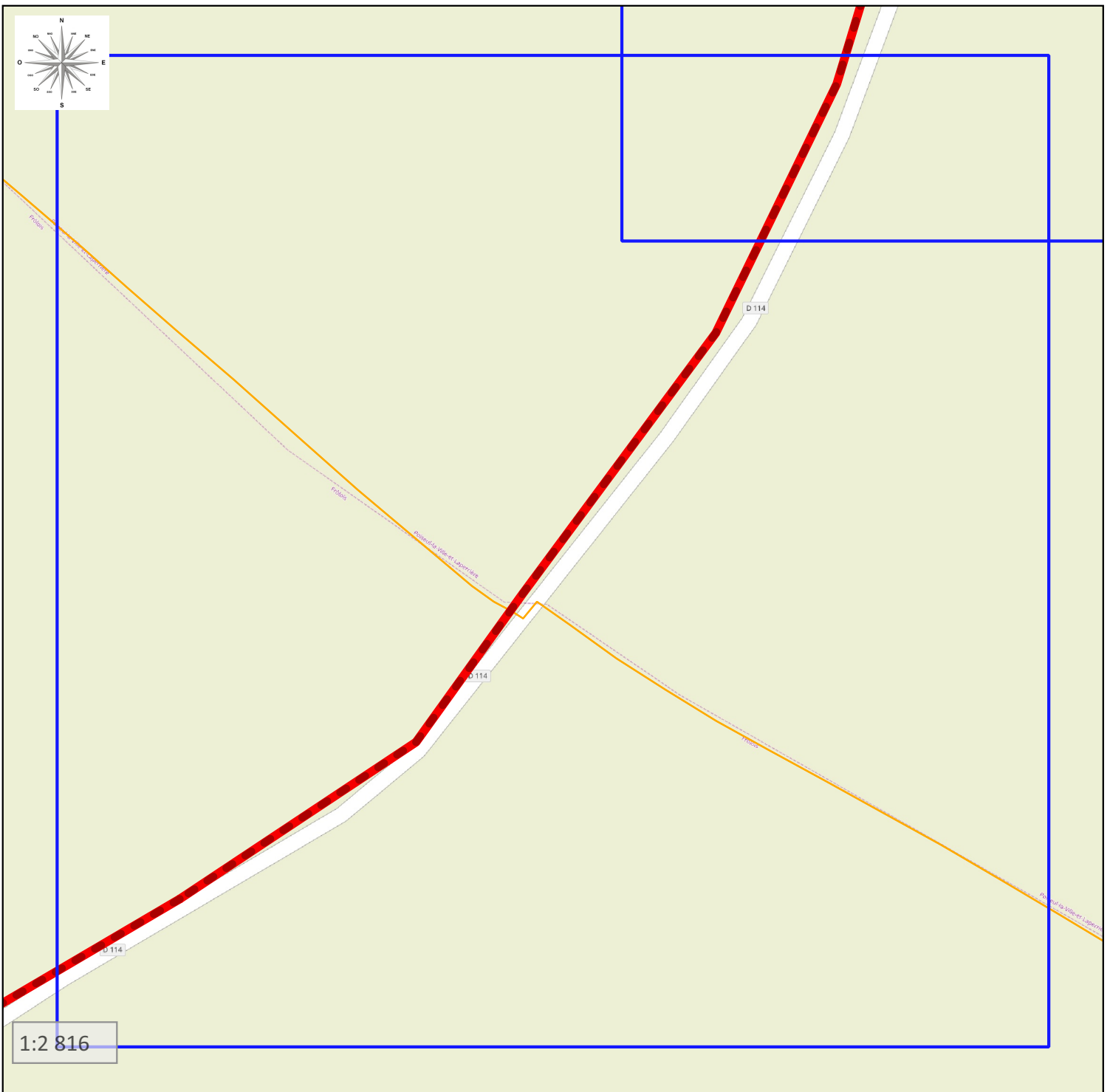
1:2 816

Synoptique GC D114

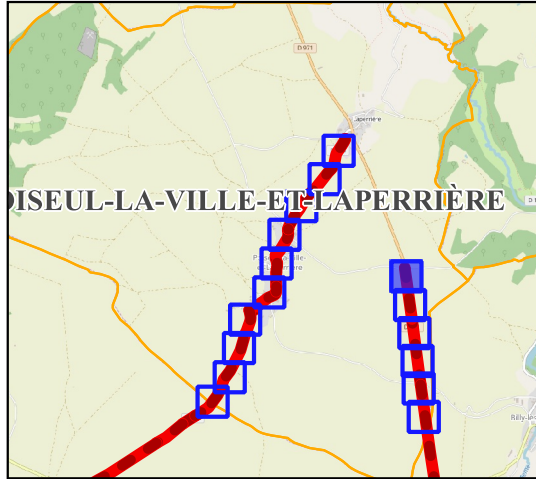


Légende :

 GC

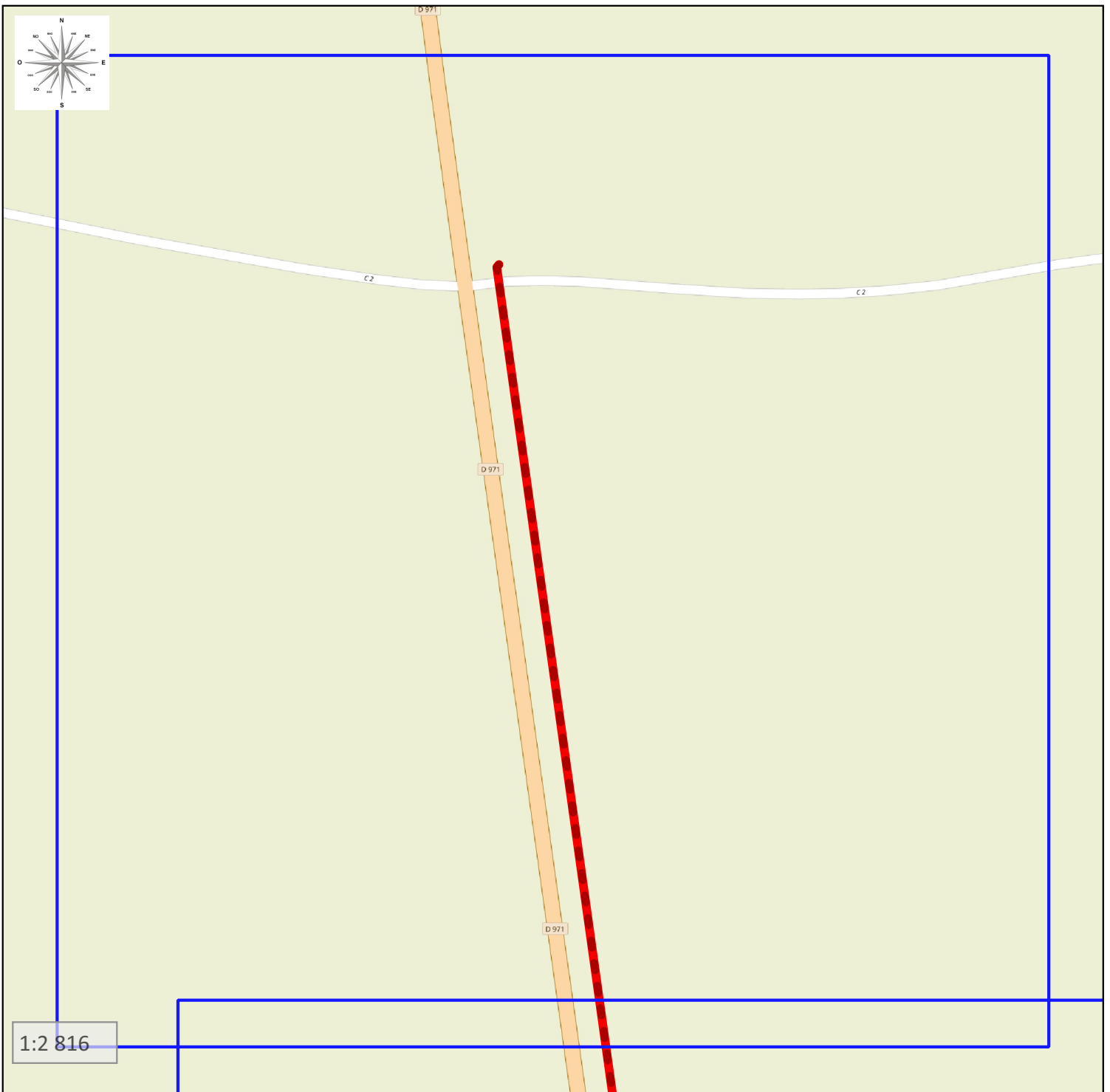


Synoptique GC
D971

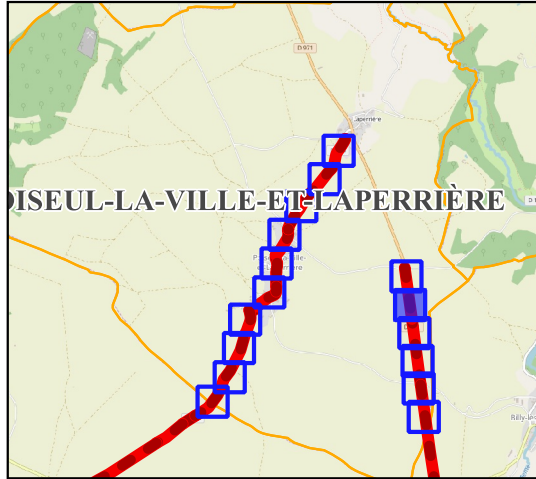


Légende :

 GC

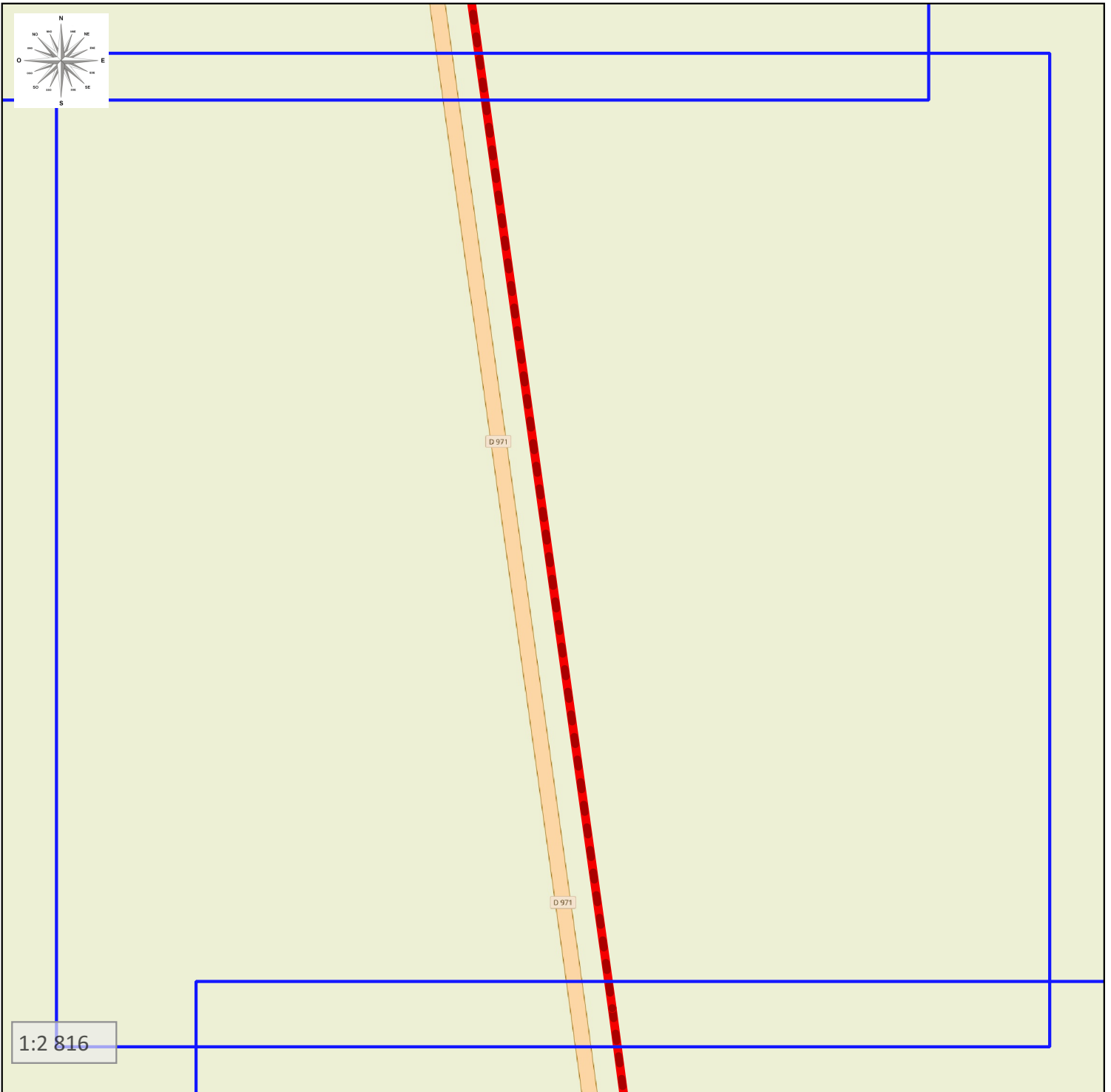


Synoptique GC D971

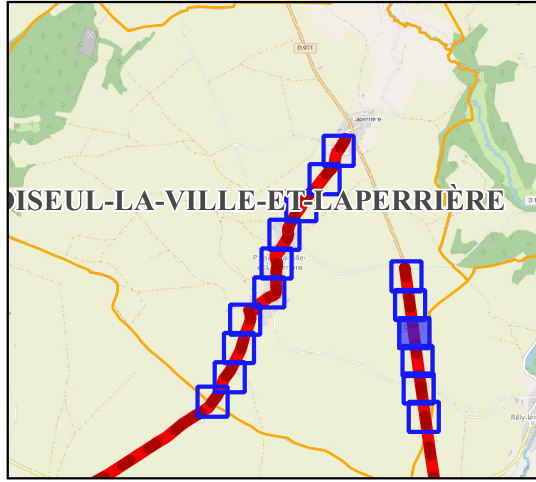


Légende :

 GC

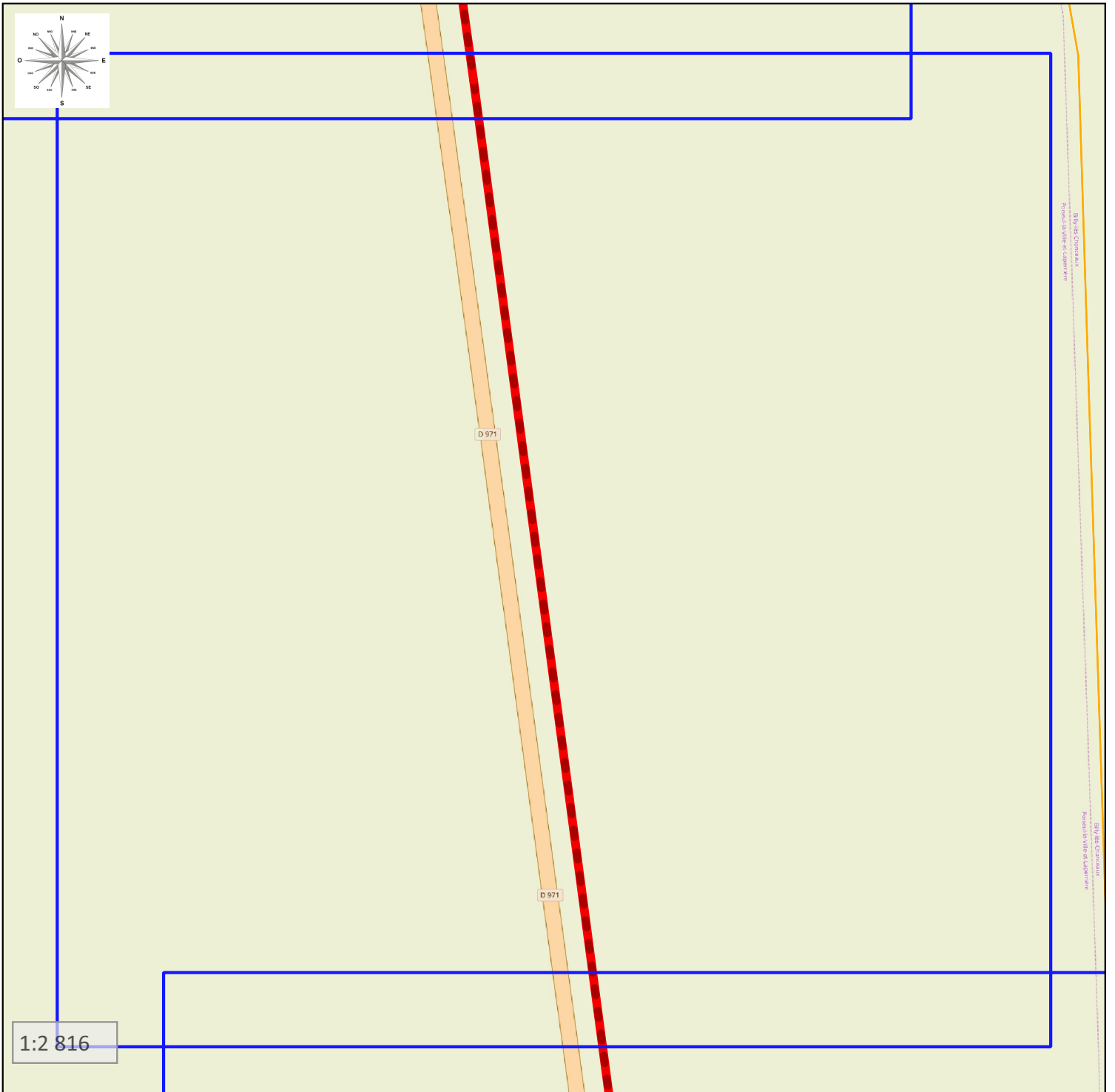


Synoptique GC D971

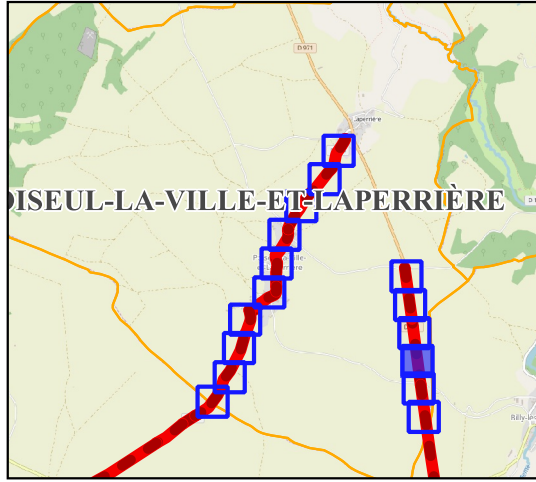


Légende :

GC

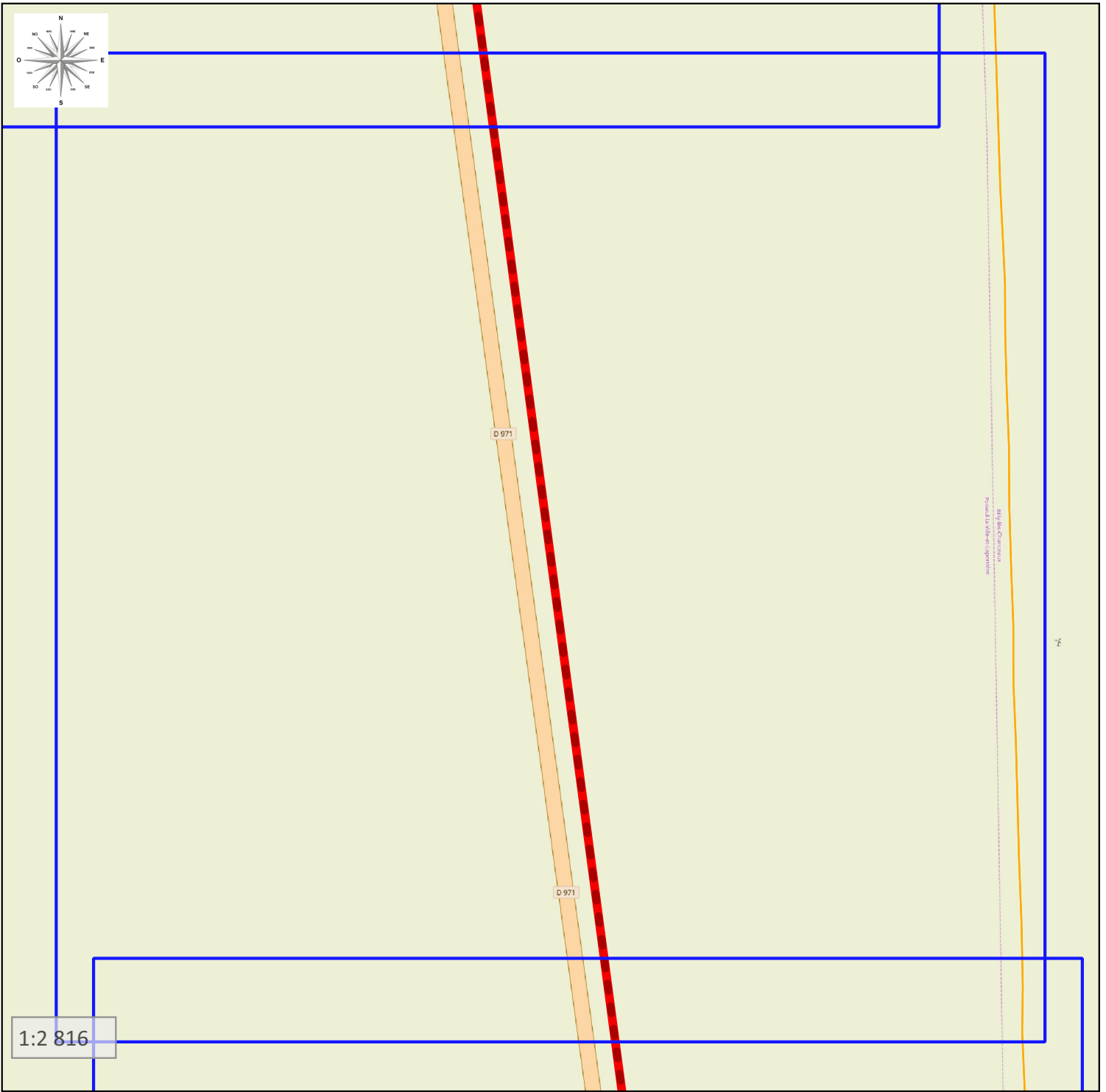


Synoptique GC D971

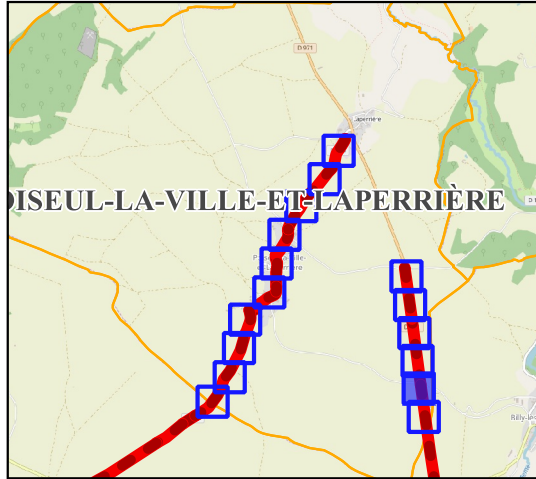


Légende :

 GC

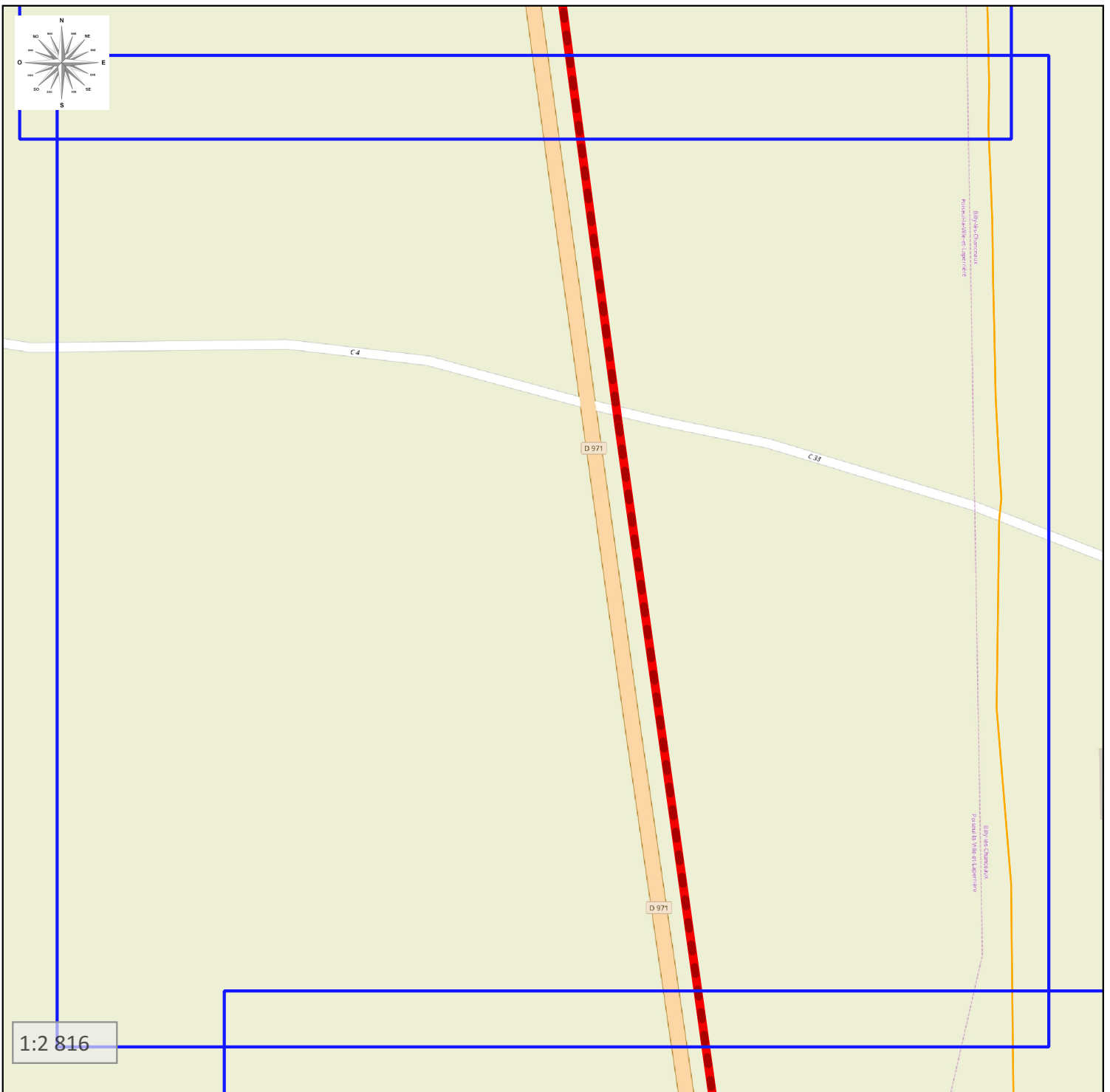


Synoptique GC
D971



Légende :

GC



1:2 816

