



PUBLICATION dans le cadre de l'Article L.49
du Code des Postes et Communications Électroniques

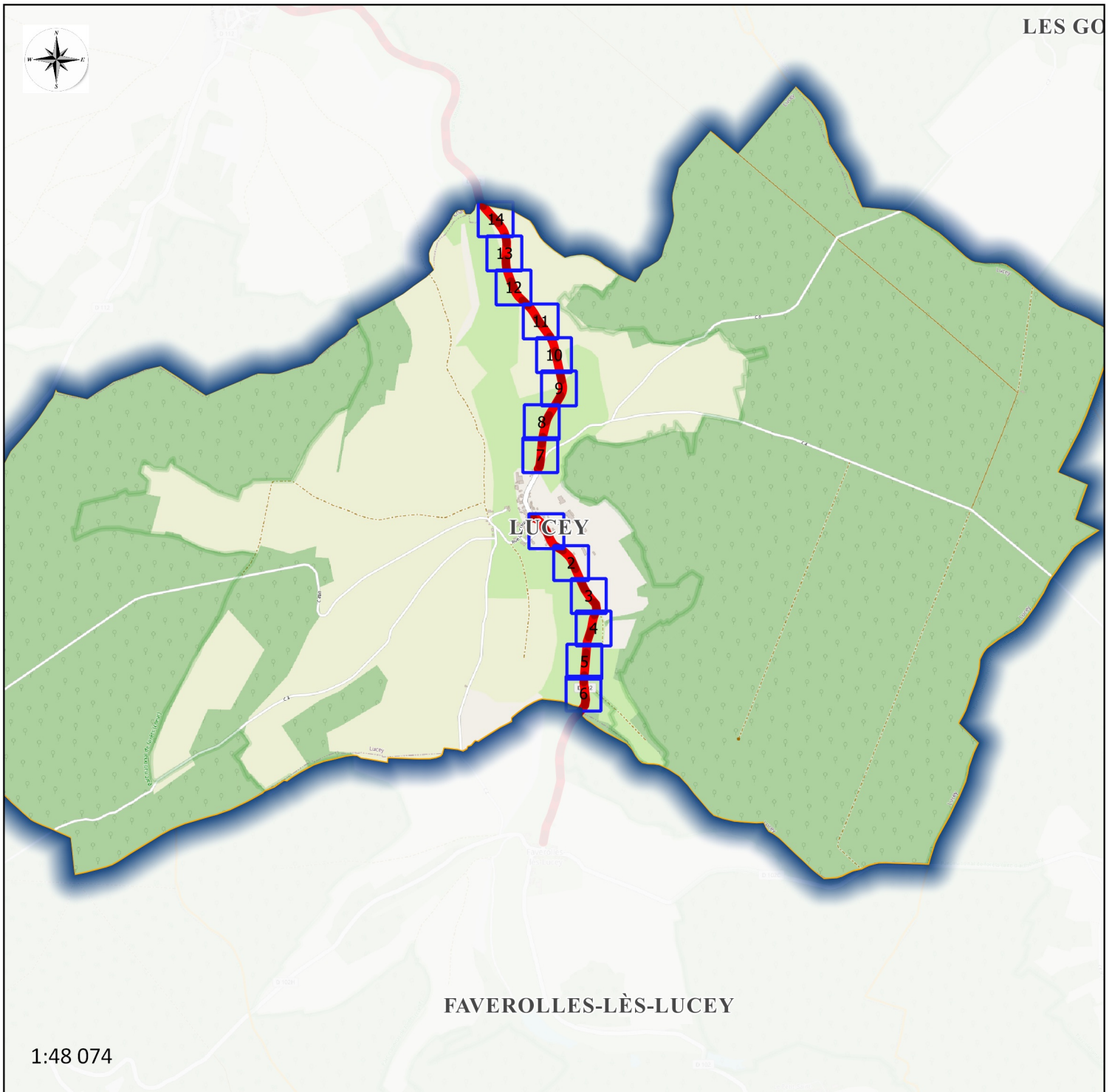


Figure 1 : vue d'ensemble du Génie Civil à réaliser sur la commune de LUCEY

1. CONTACT :

Maître d'ouvrage :

Conseil Départemental de Côte-d'Or

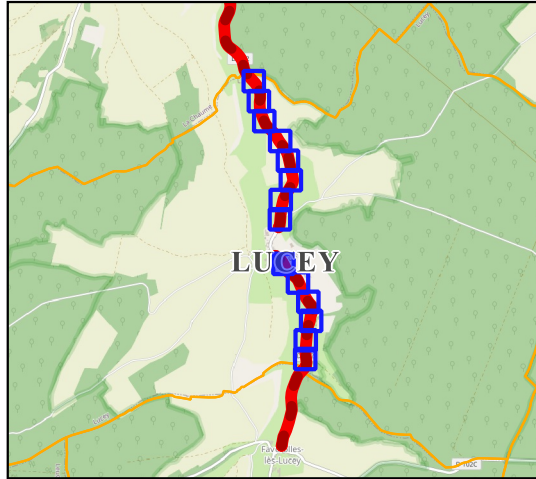
**Pôle Aménagement et Développement des Territoires
Mission Aménagement numérique**

**1, rue Joseph Tissot
B.P. 1601 – 21035 Dijon Cedex**

Chargé d'affaires Mission Aménagement numérique :

**M. Frédéric POURNIN
Tel : 03 80 63 67 12
e-courriel : frederic.pournin@cotedor.fr**

Synoptique GC
D102

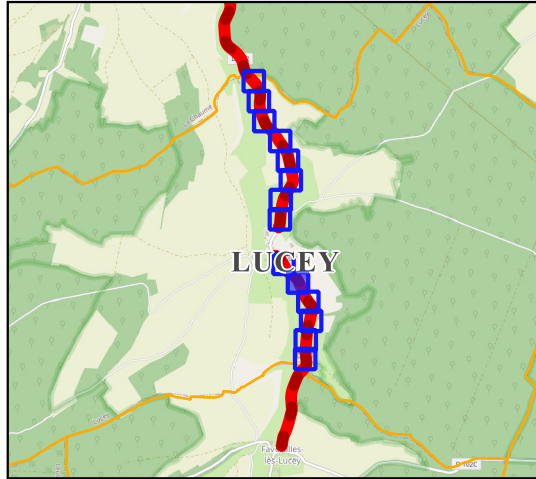


Légende :

GC

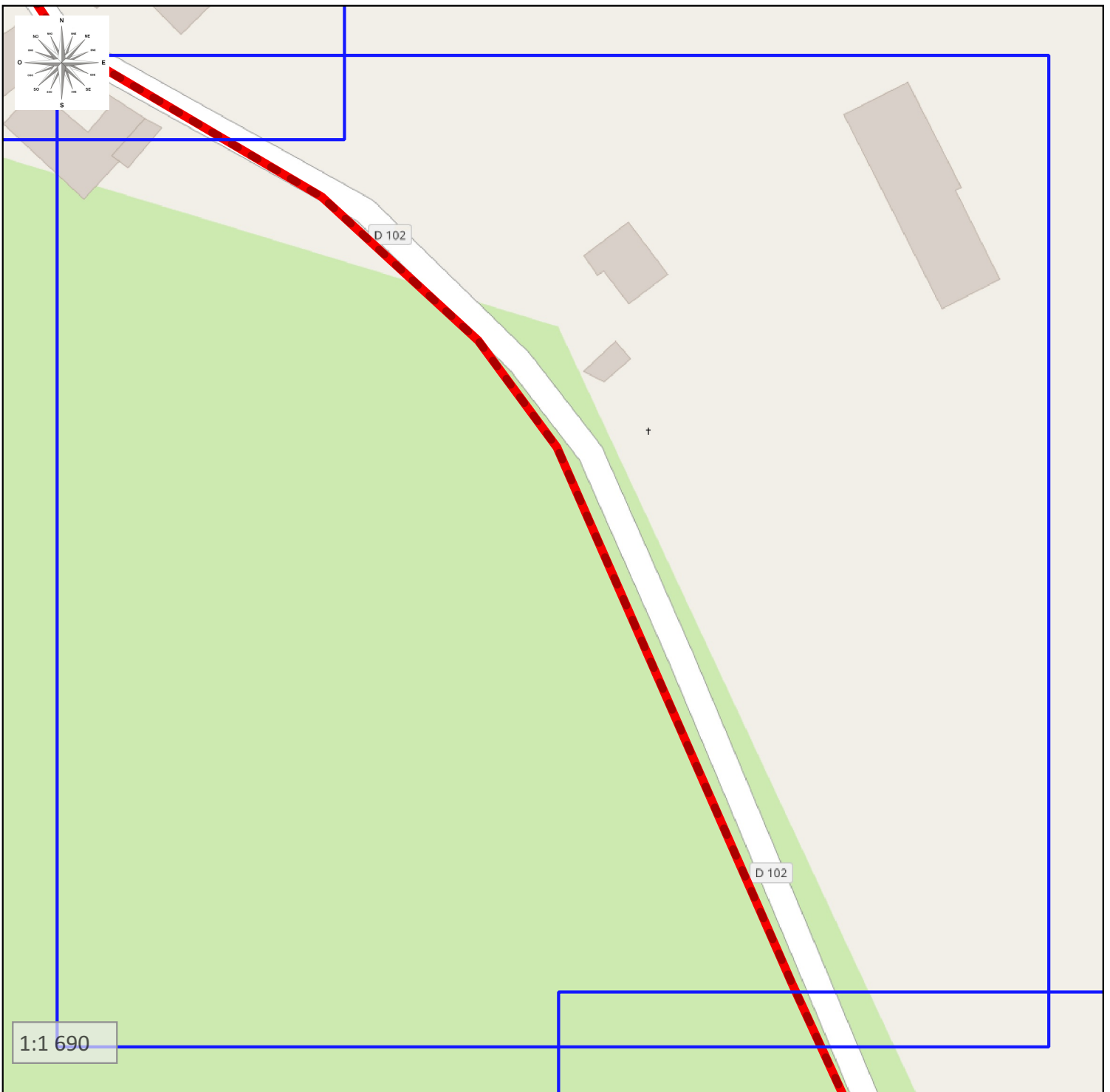


Synoptique GC
D102



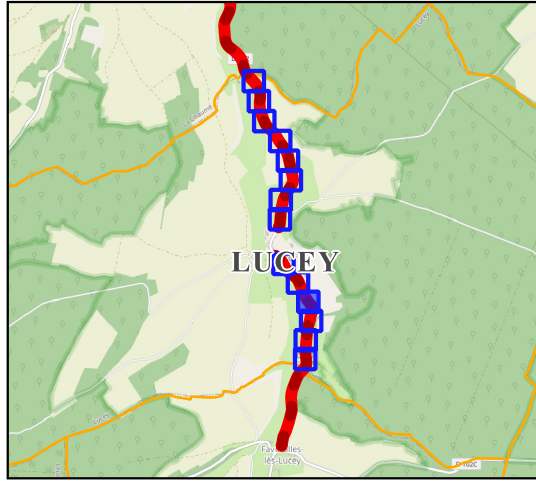
Légende :

GC



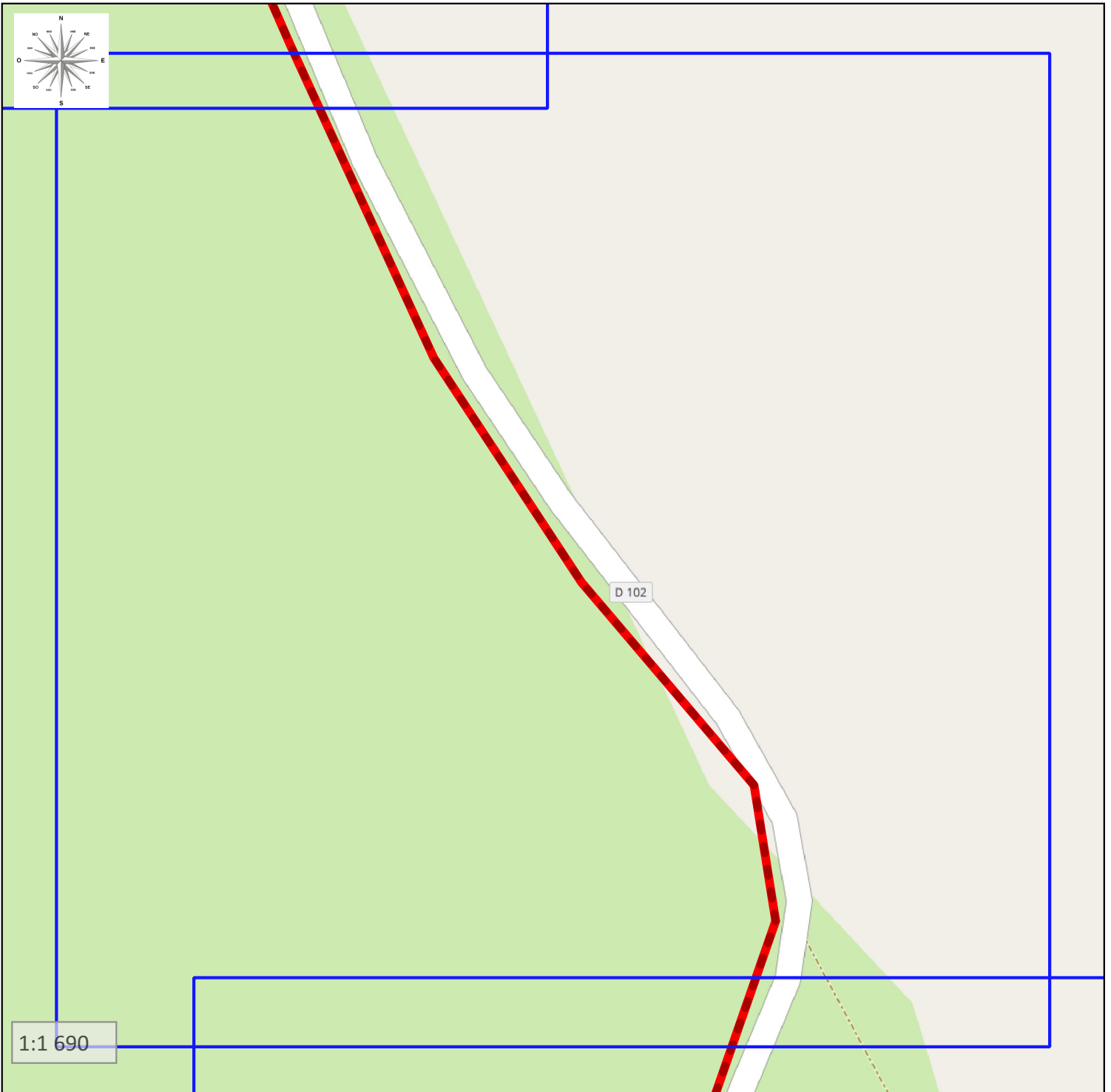
1:1 690

Synoptique GC
D102



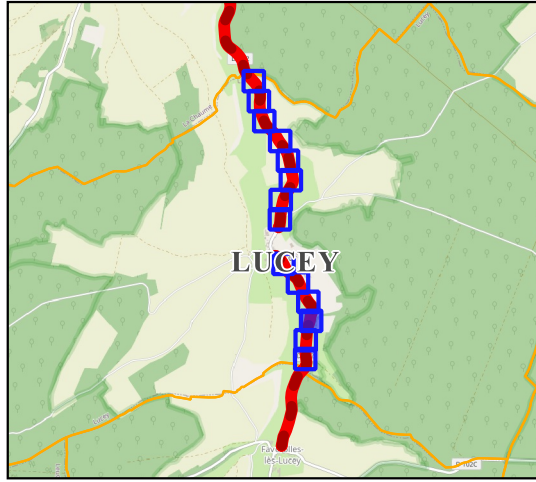
Légende :

GC



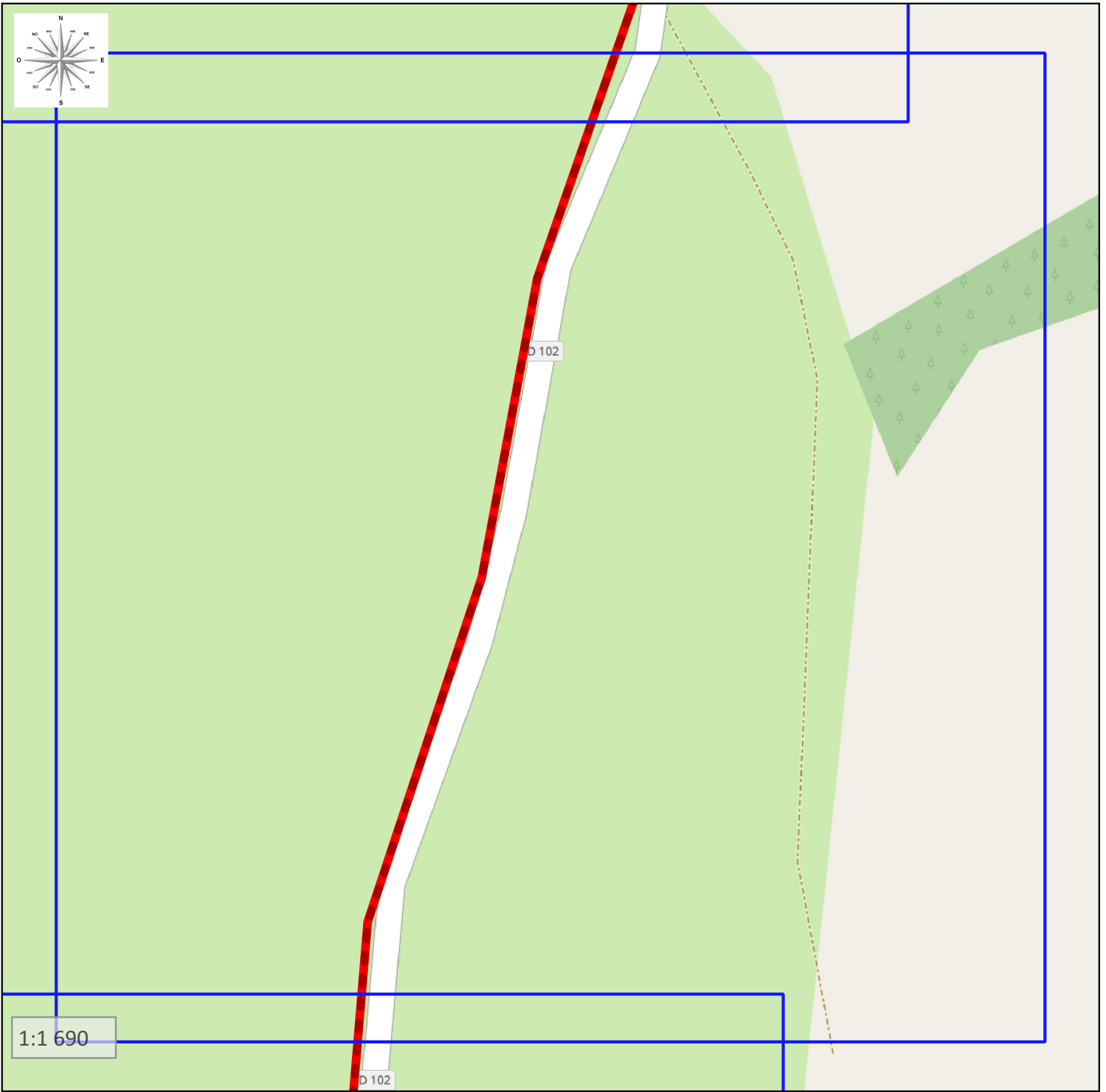
1:1 690

Synoptique GC
D102



Légende :

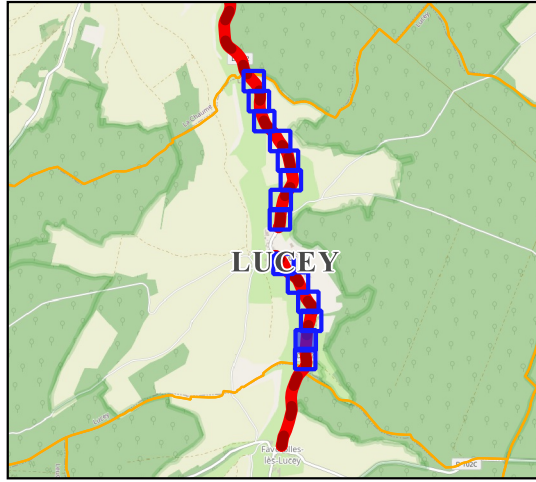
GC



1:1 690

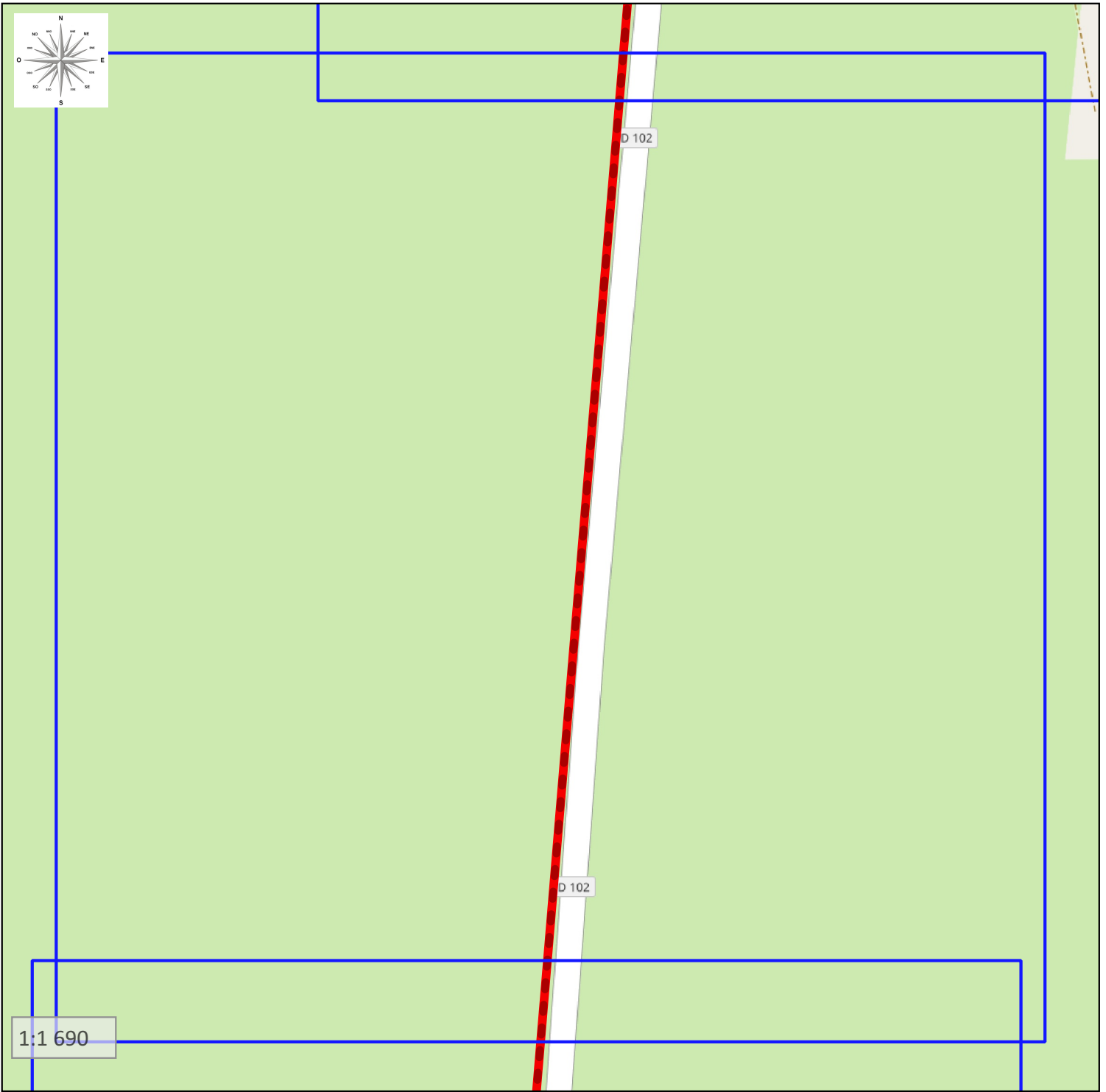
D 102

Synoptique GC
D102



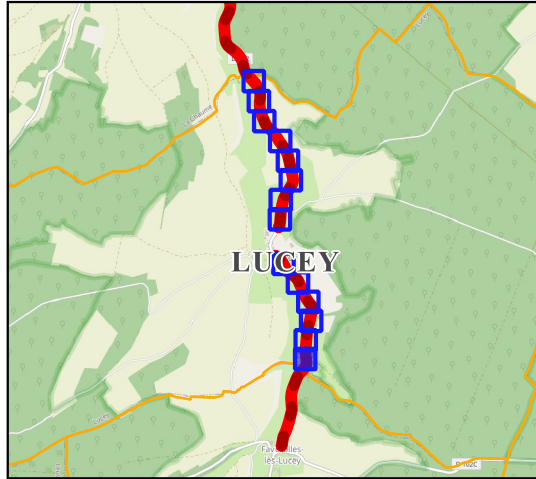
Légende :

GC



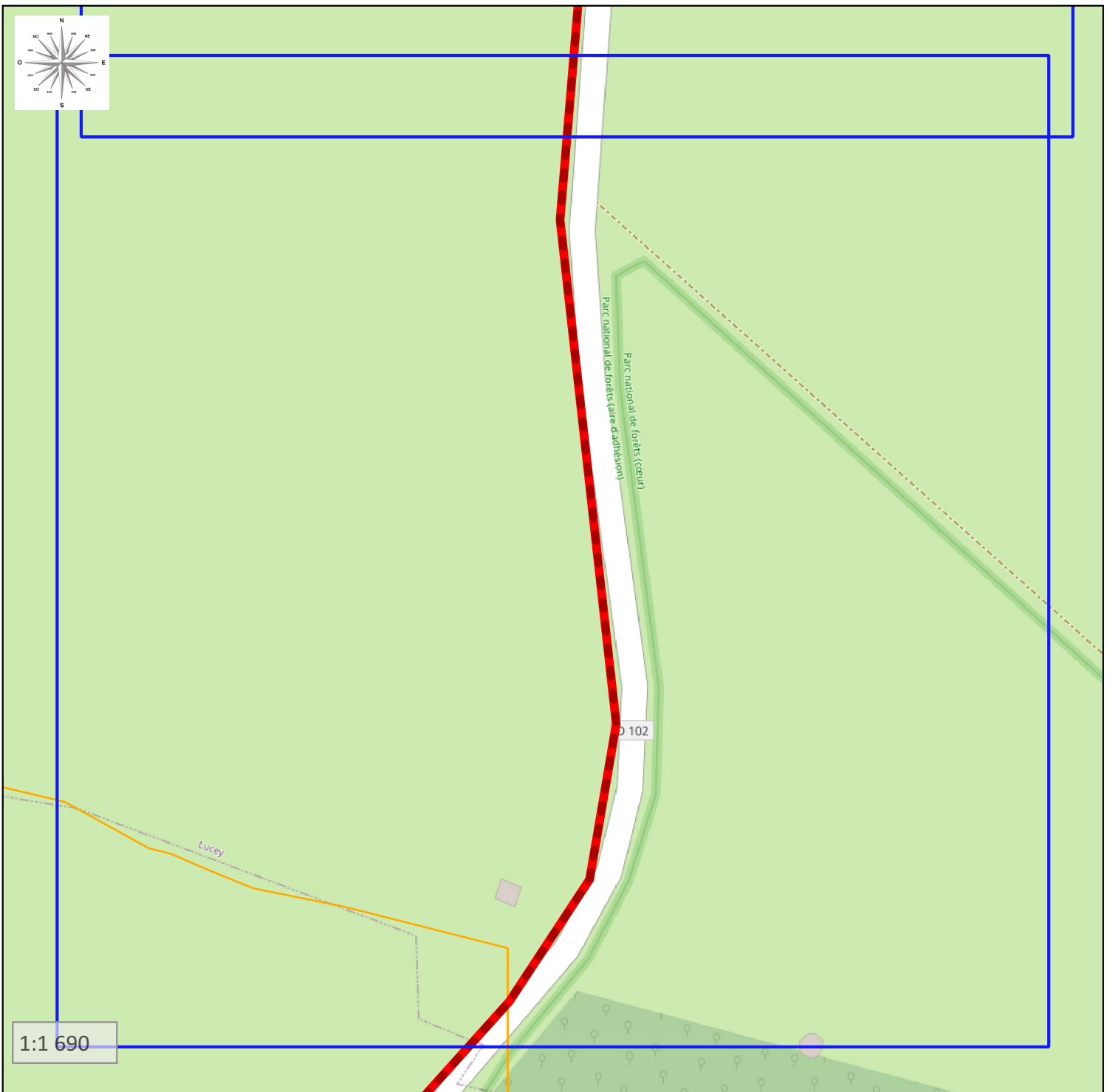
1:1 690

Synoptique GC
D102

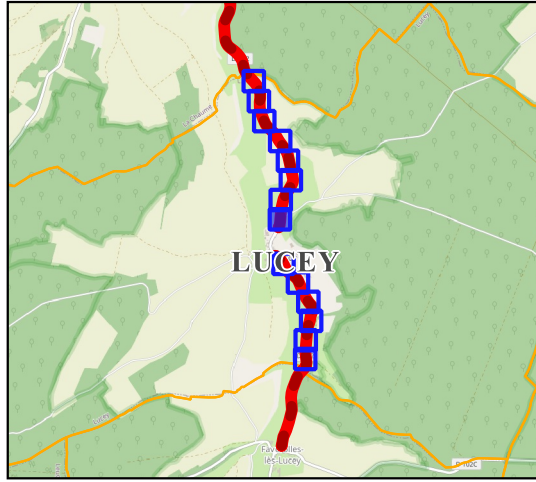


Légende :

GC

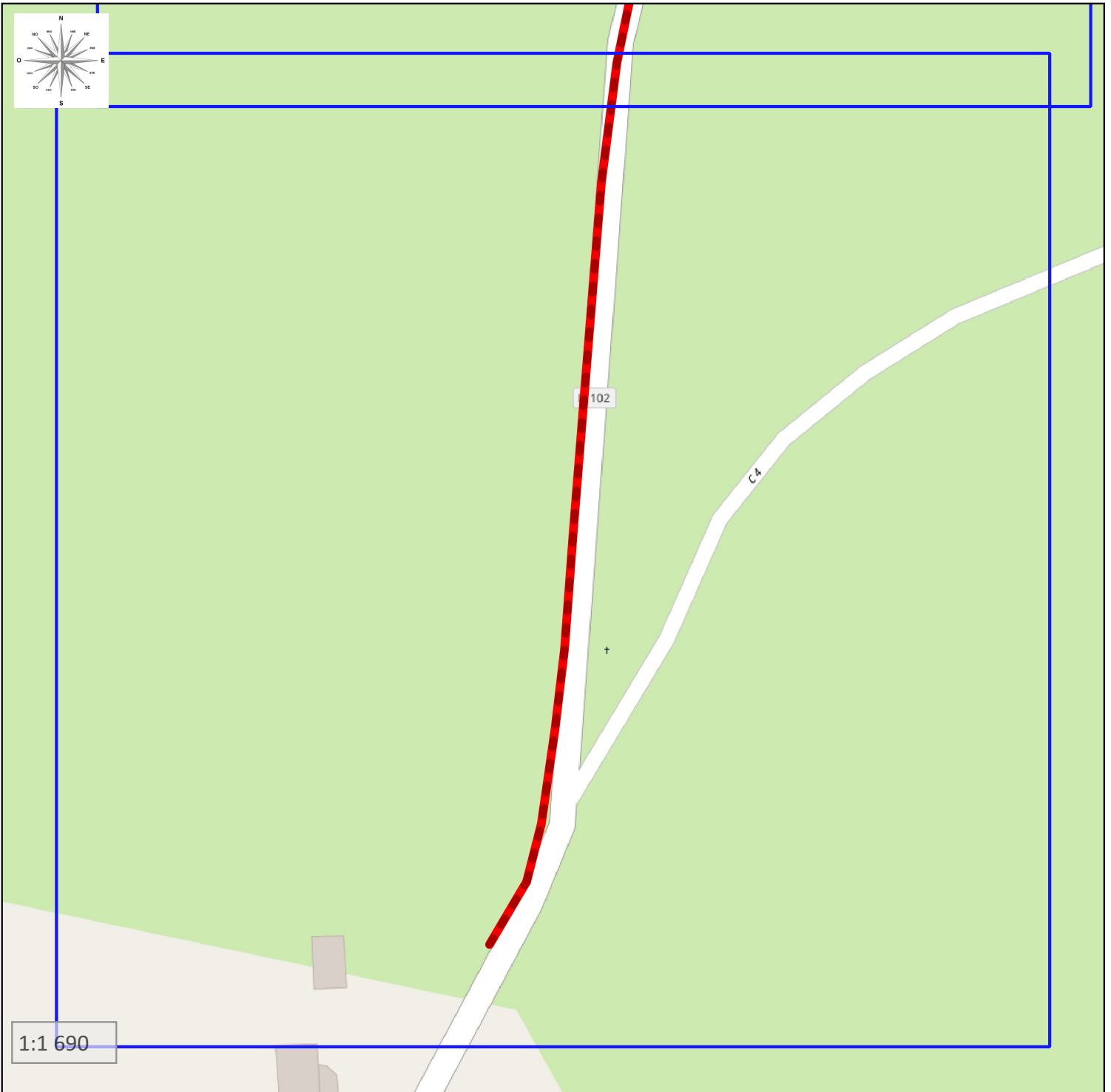


Synoptique GC
D102

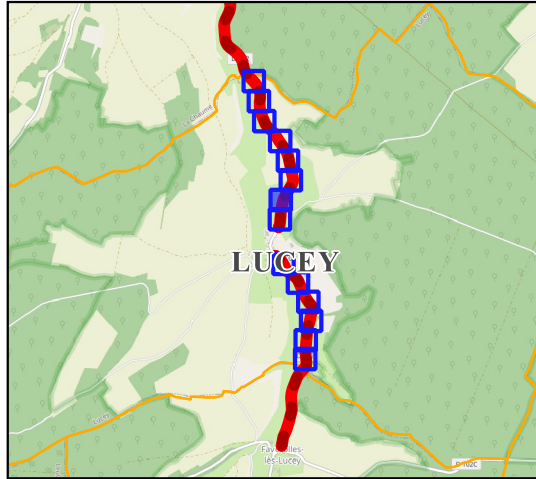


Légende :

GC

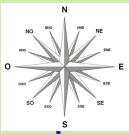


Synoptique GC
D102



Légende :

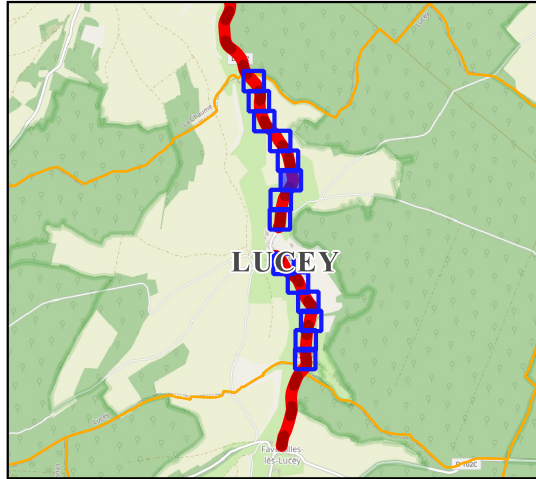
GC



D 102

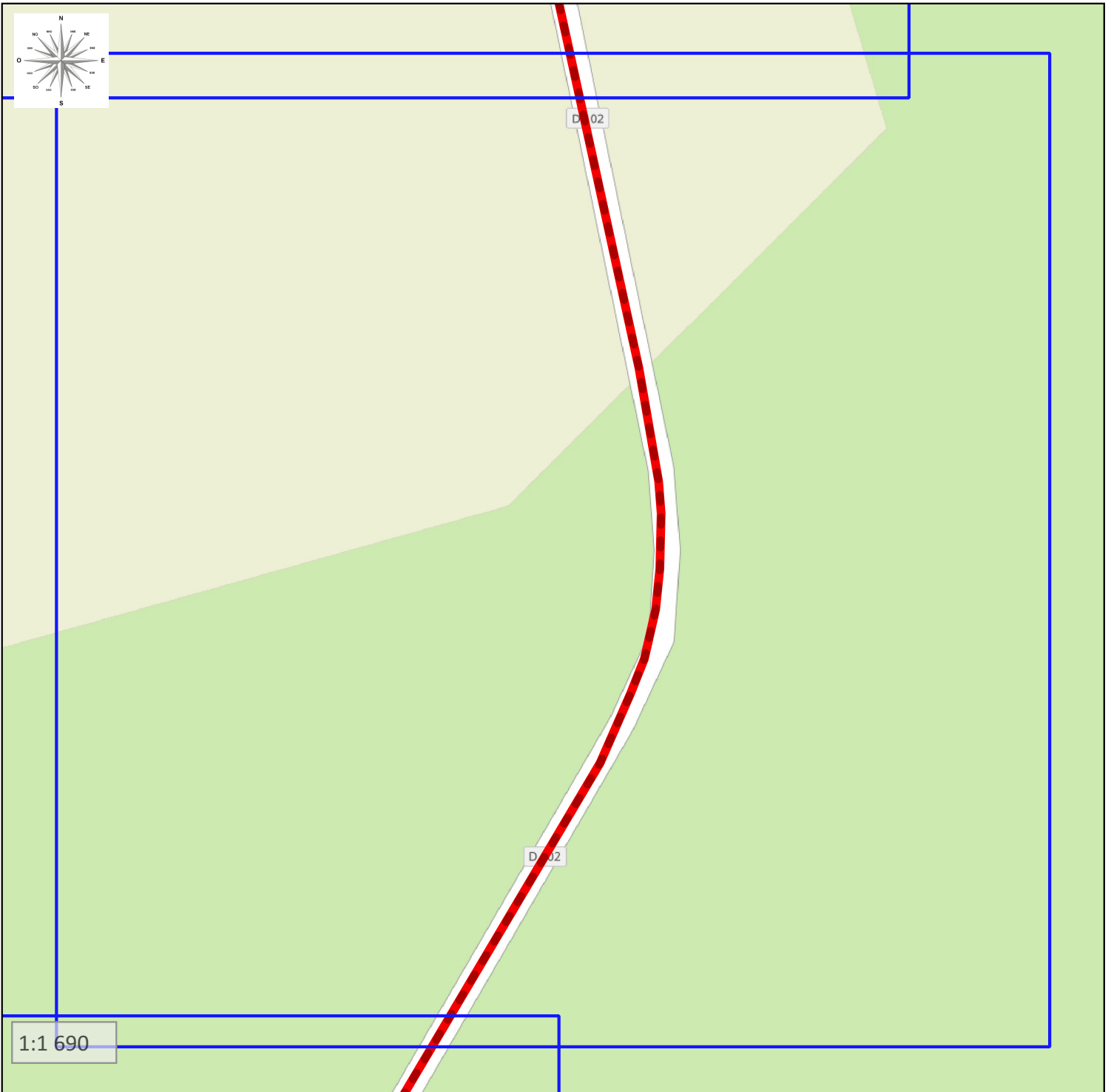
1:1 690

Synoptique GC
D102



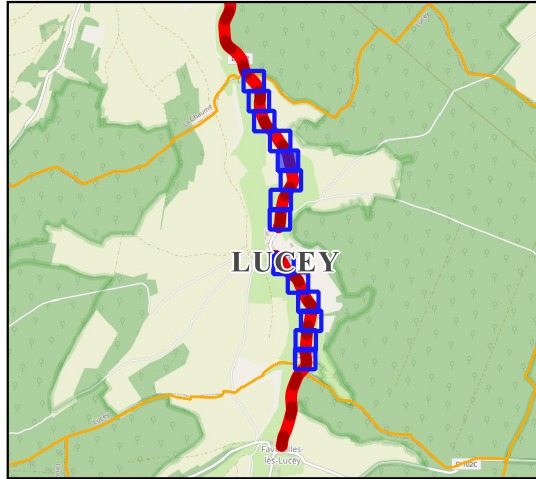
Légende :

GC



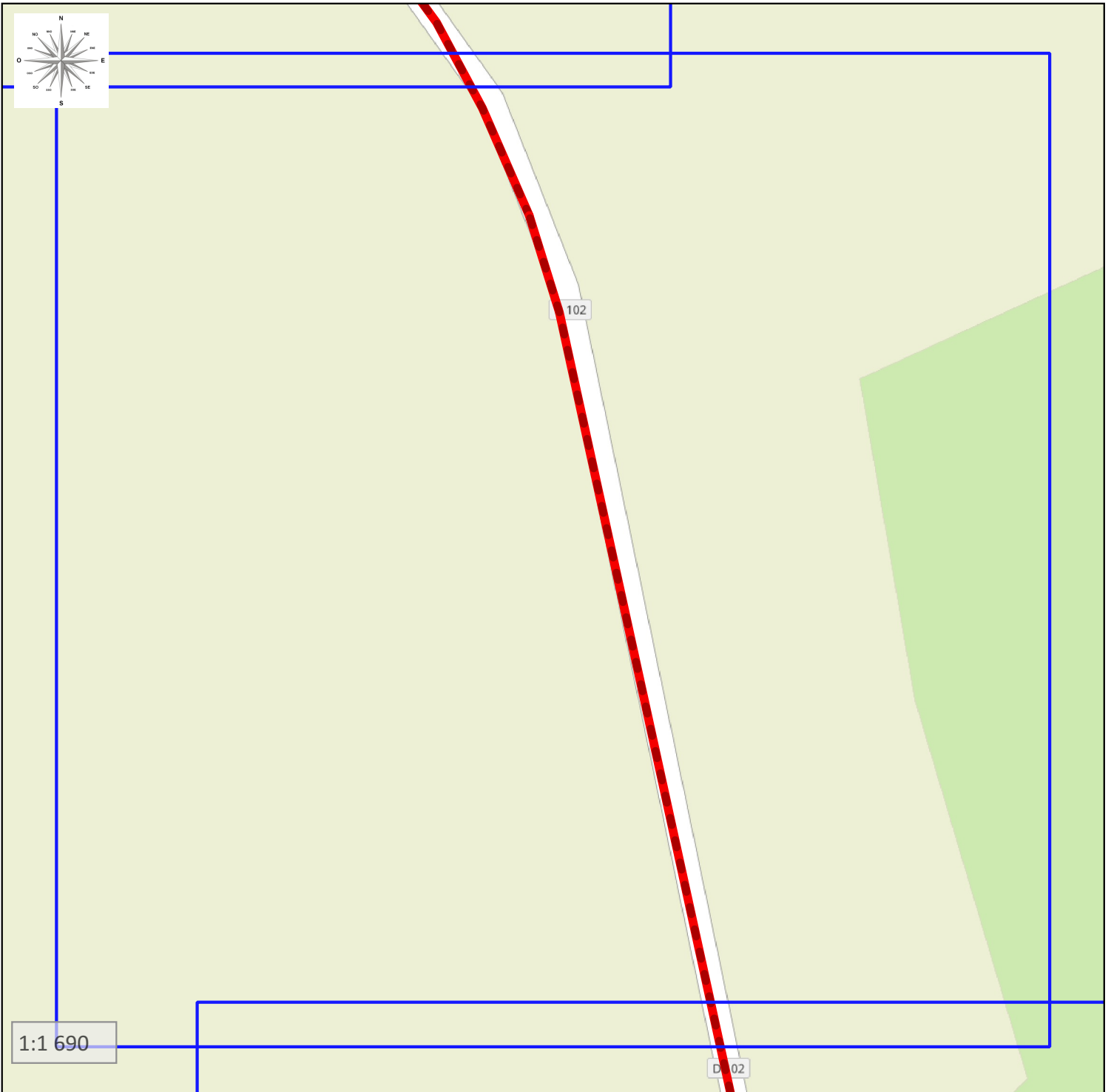
1:1 690

Synoptique GC
D102

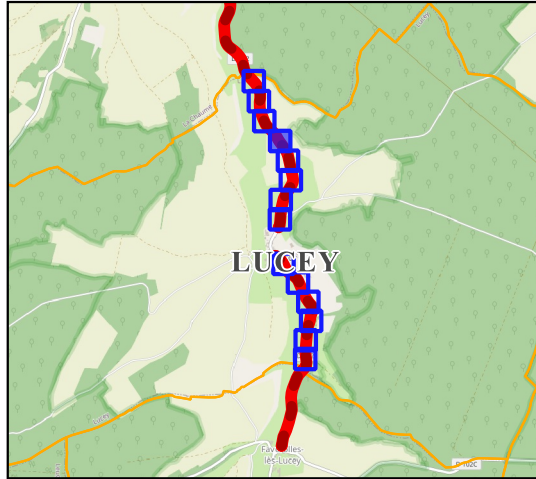


Légende :

GC

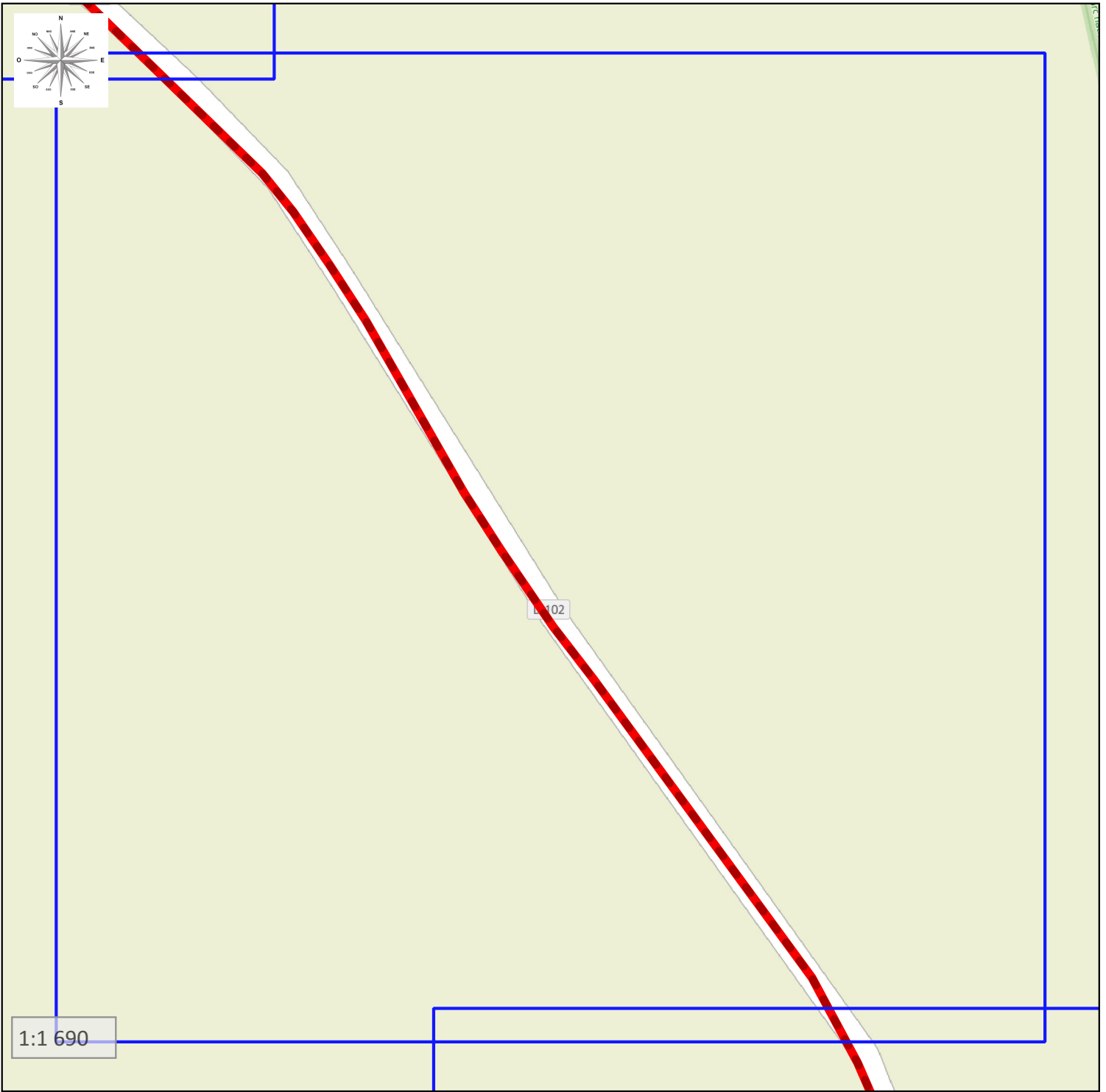


Synoptique GC
D102

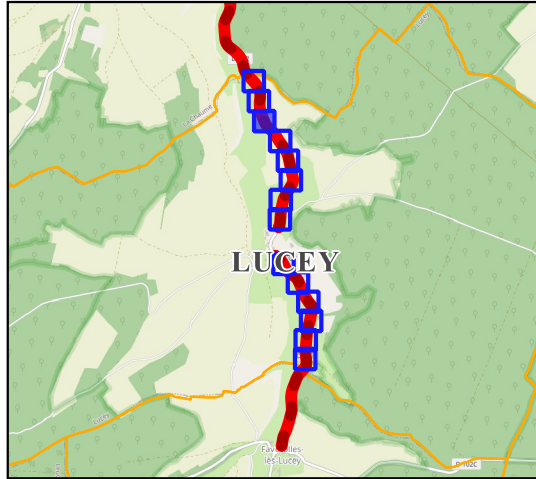


Légende :

GC

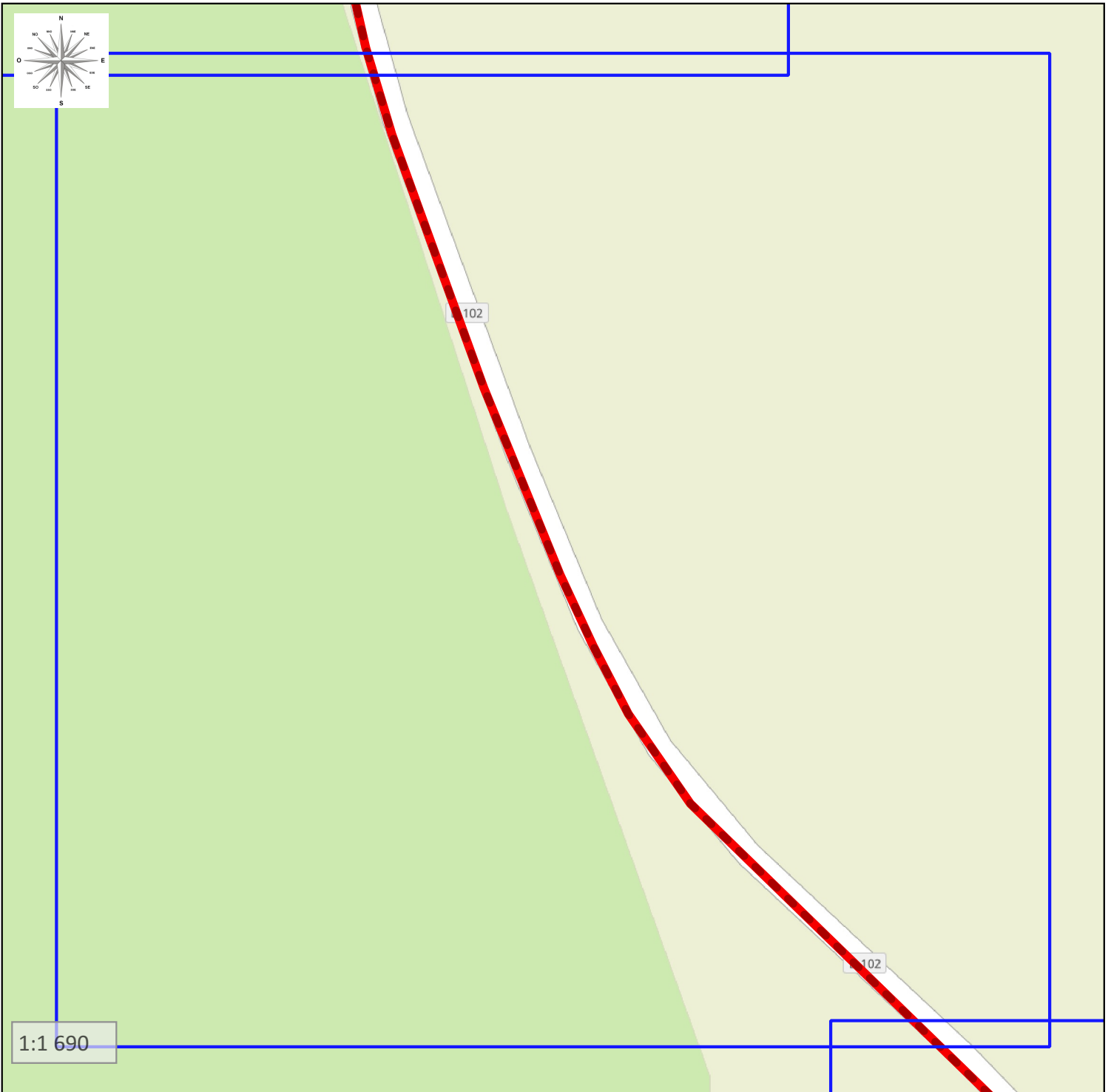


Synoptique GC
D102

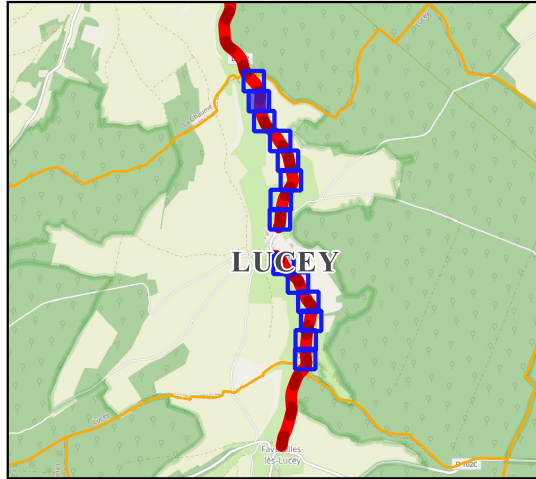


Légende :

GC

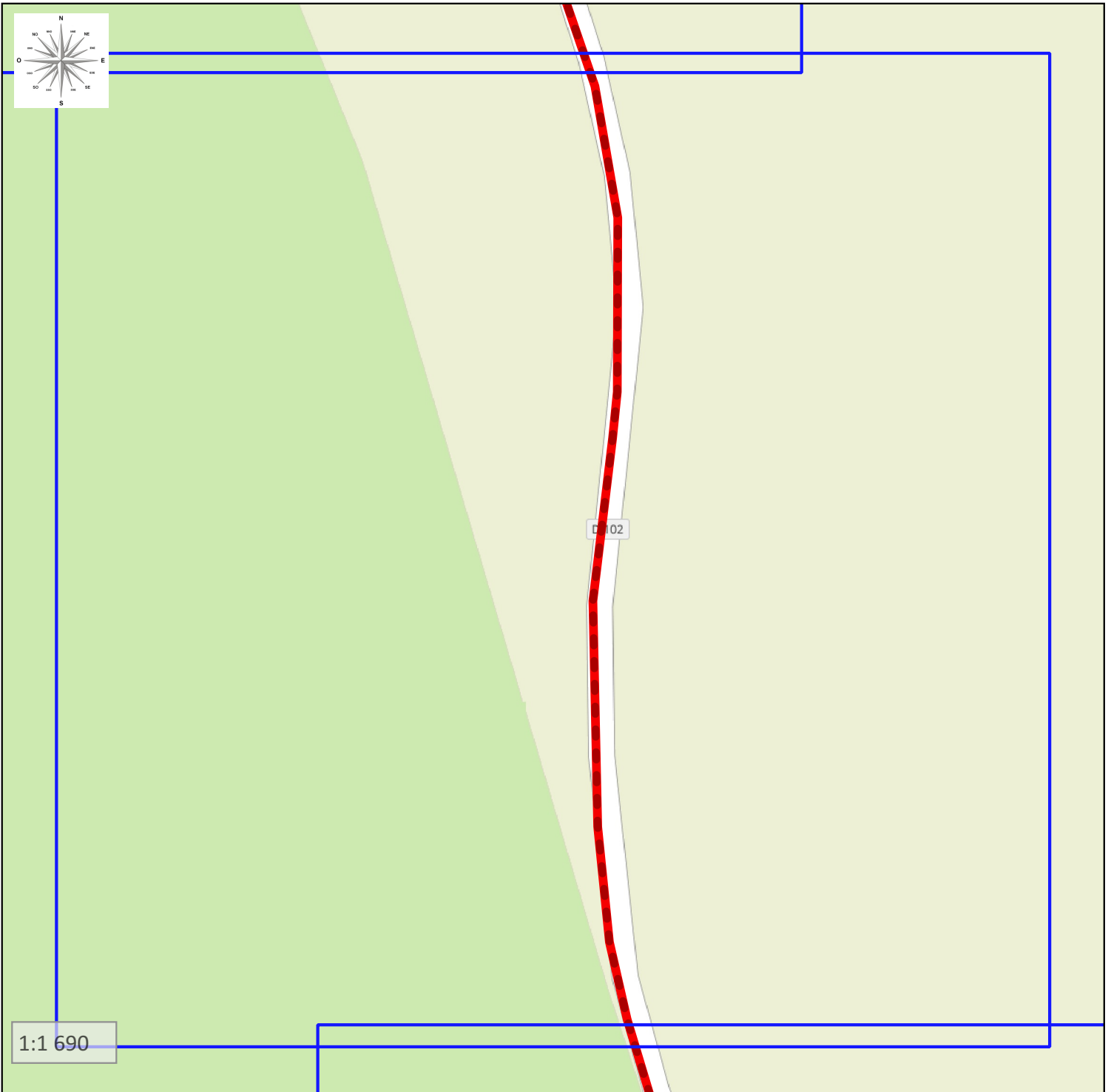


Synoptique GC
D102



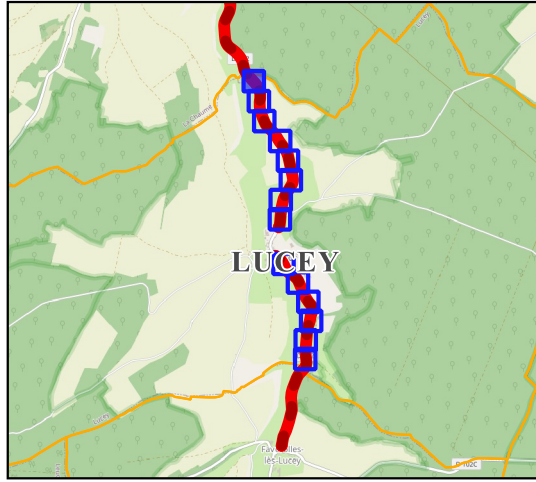
Légende :

GC



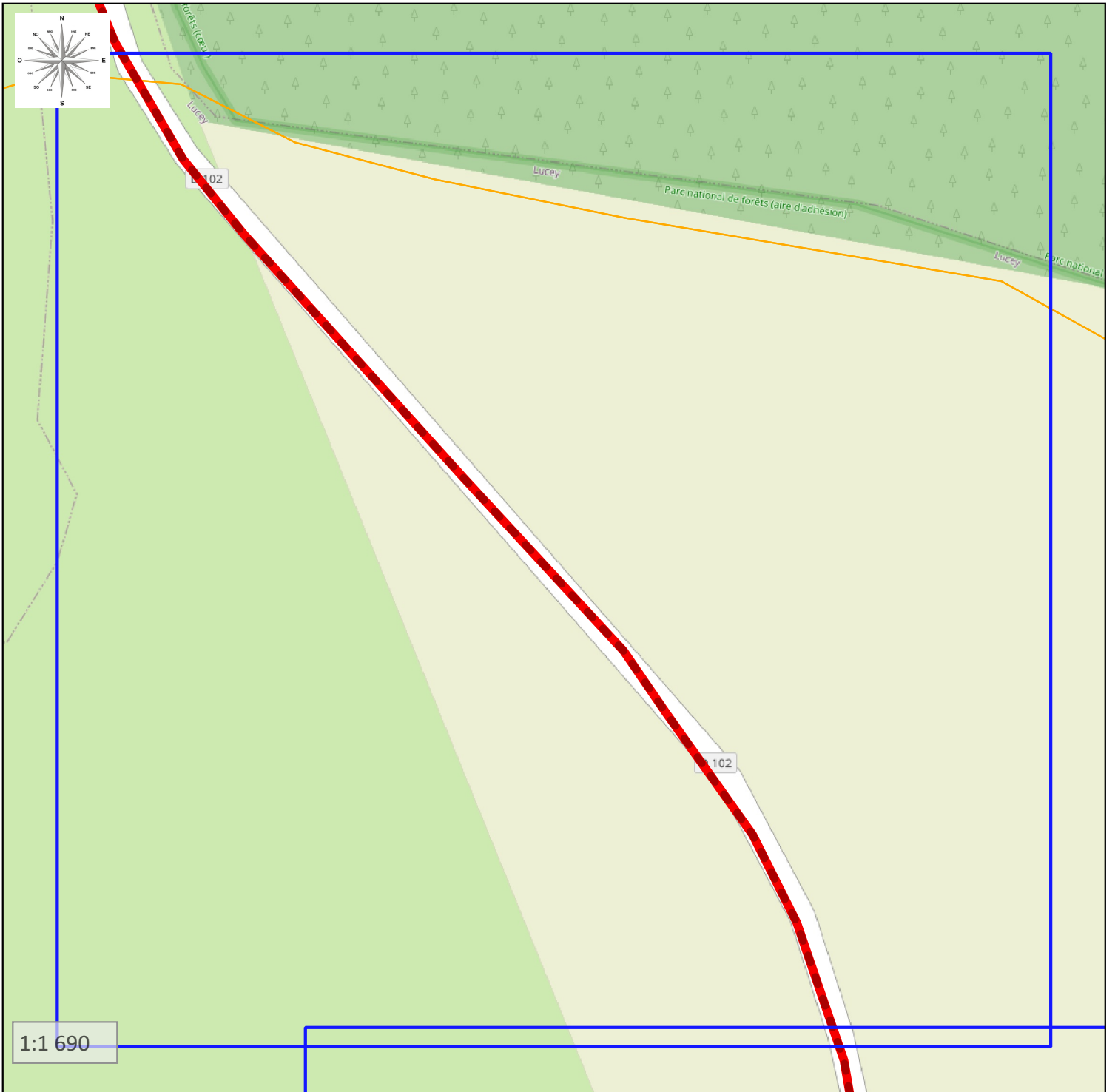
1:1 690

Synoptique GC
D102



Légende :

GC



1:1 690